



# Sixth Form 2023-24 Prospectus



# Lipson

## Cooperative Academy

 Bernice Terrace, Plymouth PL4 7PG  01752 671318  @LipsonAcademy

 lca@lipson.plymouth.sch.uk  LipsonCooperativeAcademy

part of the **Ted**  
Wragg **Trust**

# Contents

- 4 Introduction from Mr Mee, Head of Sixth Form
- 5-10 Application Process

## ACADEMIC COURSES

- 12 Biology A Level
- 13 Chemistry A Level
- 14 Physics A Level
- 15 Psychology A Level
- 16 Applied Science BTEC
- 17 Health & Social Care BTEC
- 18 English Language A Level
- 19 English Literature A Level
- 20 French A Level
- 21 Mathematics A Level
- 22 Geography A Level
- 23 History A Level
- 24 Politics A Level
- 25 Religion, Philosophy & Ethics A Level
- 26 Sociology A Level
- 27 Fine Art/Graphic Communication  
3D/Textiles A Level
- 28 Art Photography A Level
- 29 Creative Media Production BTEC
- 30 Business Level 3 CTEC
- 31 Engineering Level 3 BTEC
- 32 IT Level 3 CTEC
- 33 Music Practitioner Level 3 RSL
- 34 Performing Arts BTEC
- 35 Sport and Physical Activity CTEC

## VOCATIONAL COURSES

- 38-39 Animal Care
- 40-43 Business
- 44-45 Engineering & Manufacturing
- 46-47 Working with Children & Young People
- 48 Health & Social Care
- 49 Public Services
- 50-51 Hair & Beauty
- 52 Travel & Tourism
- 53 Sport
- 54 English and Mathematics Re-take Options



# Kevin Mee, Head of Sixth Form

## Welcome to Lipson Co-operative Academy Sixth Form



It gives me great pleasure to welcome you to the Sixth Form at Lipson Co-operative Academy. The choices that students make now, regarding their courses at post 16, will probably be some of the most important during their educational journey/pathway. This document provides you with advice and information on what we can offer you in the next phase of your education.

Lipson is a fantastic place to learn and study; it is a place our students enjoy being part of, and thrive in. The opportunities, both academically and personally, that a student receives at Lipson not only mean that we retain our current students, but also attract students from other colleges and schools in the local area.

Our results in Sixth Form have continued to be positive year on year, and I wanted to share this success in a few key points below. In 2022, we:

- Moved into the top 20% performing Sixth Forms in the country with an average B grade
- Saw 95% of students achieving their first choice university
- Saw an increased number of students opting to attend Russell Group universities
- Experienced an increase in intake of both current and external students

We recognise that students' choice of courses in Sixth Form is an important one; the decision that is made now is not just for the next couple of years but is about the rest of their lives. In choosing Lipson, you will choose the things that are most important to your future and we endeavor to support every student through that individual journey whatever route that may be.

We look forward to welcoming you into the Sixth Form at Lipson.

Mr Kevin Mee  
Head of Sixth Form

### APPLICATION PROCESS TIMELINE

**Thursday, November 17, 2022**  
Lipson Sixth Form Open Evening



**Friday, December 2**  
Application Form to be completed  
online



**Week Commencing January 9, 2023**  
One to One interviews with the  
Sixth Form team



**Week Commencing February 10**  
Conditional offers made dependent  
on exam results in August



**Monday-Tuesday, June 26-27**  
Sixth Form Induction Days



**August 24**  
GCSE Results Day



**September**  
Four week assessment process, for  
all students, to ensure course  
suitability

# The Application Process

## How many subjects do I choose?

We recommend that all students study 3 subjects if they are following the academic pathway. In some cases, and based on GCSE results, students can take up to 4 subject choices.

## How do I apply?

Internal students need to apply by completing the online Sixth Form application form through their school email address, and external applicants must complete the application form included in this pack.

## When is the deadline?

All applications should be received by Friday 2nd December 2023. Applications received after the deadline date will be held on the waiting list.

## Can I change my courses after the deadline?

Yes, you can still make changes to your application form. All the courses you have selected and your suitability will be discussed at your interview.

## When are the interviews?

Interviews will take place during January. These will be arranged at a convenient time for internal students during the school day and an open afternoon will be held for any external students in February.

On the day of the interview, both internal and external students will need to bring evidence of their predicted GCSE grades and current attendance percentage.

## A-Level Qualifications

### What are A-Levels?

A-Levels are qualifications that are offered by schools and colleges for students aged between 16 and 19. They follow GCSEs and generally focus on academic subjects. There are many different A-Level subjects that you can take, some will be subjects that you might have studied at GCSEs and others might be new.

A-levels are very highly valued by employers and universities so they can open up lots of doors to further study and careers.

### Which careers require A-Levels?

Some careers require you to have a degree, and you need to have specific A-Levels to get a place on that degree.

Some common ones are:

- Veterinary Science, which requires Biology and one or two subjects from Chemistry, Maths or Physics
- Medicine, which requires Chemistry, Biology and either Maths or Physics
- Dentistry, which requires Chemistry Biology and either Maths or Physics

If you have a certain degree or career in mind it's really important that you have a look at the entry requirements to those courses when choosing your A-levels. Unifrog will support you here.

This will also be checked by the Sixth Form team as part of the interview process so do not panic!

### Unsure on which career?

If you have no idea what you want to do next then you're better off choosing a more general subject. There are some A-levels that help you to keep your options open; these are known as facilitating subjects.

The more of these subjects you choose, the more university courses you will find are open to you when you start applying.

If you don't have a certain degree or career in mind it's definitely worth considering these.

### What are the entry requirements for A-Levels?

Please see the subject specific entry requirements, but these are usually targeted at students achieving grade 6 and above at GCSE, although some subjects consider grade 5.



## Applied General Qualifications

### What are Applied Qualifications?

Applied General Qualifications are also known as BTEC or CTEC awards.

These qualifications have been recognised by many universities as fulfilling entry requirements to a range of courses. These can be studied either on their own or alongside other Level 3 qualifications.

### Who are they for?

Applied General Qualifications (BTECS and CTECS) are for students wishing to undertake study in a specific area.

### What Applied General Qualifications are available?

Applied General Qualifications include BTECs and OCR Cambridge Technical qualifications as well as a range of other vocational courses.

Applied General Qualifications are available in a variety of areas, such as:

- Performing Arts
- Applied Science
- Health and Social Care
- Sport Single, Double and Triple
- Engineering
- Business
- Creative Media
- ICT
- Music

### What are the entry requirements for Applied General Qualifications?

Please see the subject specific entry requirements, but these are usually targeted at students achieving grade 5 and above at GCSE, although some subjects consider grade 4.

## Vocational Qualifications

### What is a Vocational Course?

A vocational course is a training programme which focuses more on practical work, rather than traditional academic exams. These courses prepare you with particular skills required for a specific job.

### Where are these courses run?

We work with three training providers in Plymouth who are able to offer these courses on our behalf. Students will remain as a Lipson student but we cover all the costs associated with the course.

The training providers we use are:

Discovery College Plymouth  
Achievement Training  
Norpro

### What does a typical week look like when studying a vocational course?

2 or 3 days at the training provider depending on the course chosen.

1 or 2 days work experience depending on the requirements of the course.

1 day at Lipson, either taking resit lessons in GCSE English or GCSE Math, if required, or a skills based Level 3 ASDAN qualification.

### What are the entry requirements for Vocational Courses?

Please see the subject specific entry requirements, but these are usually targeted at students achieving grade 4 and below at GCSE

# Personal Development and Enrichment Opportunities

We understand that the success of a student does not always just come down to academic outcomes. Students' personal development and the experiences they gain are just as important as the hard work they put into their studies. This is key to being a Lipson student.

By the time students leave Lipson, we want them to be well-rounded individuals who are confident in applying the skills and experiences they have learnt into everyday life. We recognise that every student has their own individual pathway and we want to be able to offer something to every student that will support them on that journey, which is why our offer of personal development and enrichment opportunities is so vast.

On the current curriculum students will have access to:

**iStudy** - All sixth form students are expected to undertake independent study as part of their Level 3 courses. We have a dedicated supervised area set aside for completion of independent study and homework. We place a great deal of importance on Independent study, with current research showing that this has a great impact on students outcomes.

**Super Curriculum** - All students can access the subject specific super curriculum. Written by curriculum leaders it allows students to take their passion for learning a subject beyond the curriculum.

**Study Skills Tutor Programme** - All students access our specialist study skills program, which teaches students new skills on how to study.

**Extended Project** - Students can opt into taking Extended Project as an additional qualification. This is a well recognised Level 3 qualification and allows students to independently demonstrate the skills and knowledge that both universities and employees demand from young adults. The qualification carries UCAS points and can sometimes carry a reduced offer from university.

To support personal development and wellbeing all students have the opportunity to take part in the following:

Outreach Programmes, in particular with Exeter, Oxford and Cambridge Universities	University Scholars schemes	Seas Your Future	Medic Mentors for Medicine, Veterinary, Dentistry and Allied Healthcare students.
Next Steps South West University Support	Navy Cadets	Camps International	Devon Wednesday Football team
Work Placements	Reward/Wellbeing Events	Student Leadership	Performing Arts



# Careers

Students receive up to date information, advice and guidance from the Careers Leader, Mrs Marshall.

The Academy also offers independent careers meetings with a Level 6 Advisor from CSW ([cswgroup.co.uk/](http://cswgroup.co.uk/)). This means that students are able to make informed decisions as to which post 18 pathway is appropriate for them, leading to sustained career destinations.

Students are encouraged to consider all opportunities available to them, ranging from university degrees, higher and degree apprenticeships, gap years and full-time employment, particularly for those who have followed a vocational pathway.

This advice is done in such a way that those students who are not sure of their final destinations in life are helped to keep as many doors open as possible, thus allowing them to progress successfully once completing their studies in the Sixth Form.

The real strength of our Careers Education and Guidance model is its developmental nature, taking into consideration an individual student's ever-changing needs and career aspirations as they progress through Key 4 and on into post 16 education; we endeavour to make these transitions as seamless as possible and students are continually asked to reflect on their learning and progression, thereby preparing them for success in life outside school.

Parents are also invited to be a part of the guidance process, establishing an on-going and effective dialogue between the academy and parents/carers so as to meet the best interest of all students.

In addition, OFSTED's remote monitoring visit in February 2021 identified that we "have rightly prioritised careers guidance to support pupils in their transition to the next phase of education, training or employment."

Please see our Careers Education and Guidance Policy and our Core Careers Education and Guidance Programme on the Academy website for more information.



To see where our students go, check out the back page



# Apply to Our Sixth Form

## How to Apply

Please follow the simple steps to apply for your place at Lipson Sixth Form:

**Identify what subjects that you are interested in** – use this prospectus to find out about the subjects we offer that interest you. If you would like any further information about a specific subject please do not hesitate to get in contact with school using the contact information on page 2.

**Decide your order of preference** – Rank your chosen subjects in order of preference from 1 to 5. 1 being your first choice. Although you will likely study 3, we get you to choose one or two reserve subject choices in case your chosen courses cannot run due to lack of interest or there is a clash with other subjects.

**Apply** – Applications to Sixth Form for current Lipson students can be made via an online google form which is accessible from your school email by scanning the QR code at the bottom of the page using a mobile device. External applicants can complete the application form included in this pack.

**Attend an interview** – After we receive your application we will invite you to attend an interview with one of the team who will also be able to answer any questions you may have. We will also be able to check your suitability and check any further aspirations such as university, if needed.

**Receive your offer** - We will let you know if you've been successful and offer you a conditional place at Lipson Sixth Form subject to achieving the relevant entry requirements.

**Results Day** - A place in Lipson Sixth Form will be confirmed after GCSE grades. If your results are not what you were expecting, we can discuss your options.

## Start of Term

We looking forward to welcoming you to our the Sixth Form in September.

## Any questions?

Thanks for taking the time to read through our Sixth Form Prospectus. If you have any further questions regarding the application process, please do not hesitate to get in touch.

Please email [studentservices@lipson.plymouth.sch.uk](mailto:studentservices@lipson.plymouth.sch.uk)



**SCAN TO SUBMIT YOUR APPLICATION**



# SAMPLE ONLY

Actual form is included in the pack

## Lipson Co-operative Academy External Student Application Form 2023 - 2025

Name:	Telephone Number:
Address:	Current School:
Referee 1 : (Name & Email)	Referee 2: (Name & Email)
Parent Name:	Parent Telephone Number / Email:

Please add in the subjects you are studying for GCSE and your predicted grades.

Maths -	English -	Science -

Now that you have read the prospectus please can you select your choices.

Academic Students - you need to choose 5 subjects; and Vocational Students - you need to choose 2 courses.

1st Choice:
2nd Choice:
3rd Choice:
4th Choice:
5th Choice:

Please return to:

Sixth Form, Lipson Co-operative Academy, Bernice Terrace, Plymouth PL4 7PG



# Academic Courses

# Biology A Level

If you are interested in the natural world, the environment, health and the human body and you would like to deepen your understanding of the key processes that enable life to exist, A Level Biology is the course for you.

The structure of the course is designed to instil key skills and promote a fuller understanding of the concepts linking the natural world; in short, to produce skilled scientists.

## What you will study in Year 12

Biological molecules  
Cells and viruses  
Classification and biodiversity  
Exchange and transport  
Ecosystems

## What you will study in Year 13

Energy for biological processes  
Microbiology and pathogens  
Modern genetics  
Origins of genetic variation  
Control systems

## Where could this take you?

Biology is one of the most popular A Level subjects in the country, attracting students studying a wide range of other subjects. Many of the students enjoy the subject so much they eventually choose a biologically related degree course. Others go on to degrees in law, computing, accounting or teaching. So, whatever field you will eventually work in, you will find Biology a very rewarding and challenging course which will develop many of the skills essential for a successful career.

**Potential degree courses supported by Biology A Level:** Medicine, Physiotherapy, Biological Sciences, Bachelor of Education-Science, Veterinary courses, Dentistry, Biochemistry, Nursing, Midwifery, Ocean Science, plus many more!



## Examinations

**Paper 1:** Advanced Biochemistry, Microbiology and Genetics: 30% of the total qualification, 1 hour 45 minutes, 90 marks

**Paper 2:** Advanced Physiology, Evolution and Ecology: 30% of the total qualification, 1 hour 45 minutes, 90 marks

**Paper 3:** General and Practical Principles in Biology: 40% of total qualification, 2 hours 30 minutes, 120 marks

## Practical skills

Practical skills will be assessed throughout the two year programme as part core practical activities. Practical work is central to any study of biology. For this reason, the specification includes these activities which form a thread, linking theoretical knowledge and understanding to practical scenarios.

## Entry Requirements

- Grade 6 in GCSE Science
- Grade 6 or above in English and Mathematics
- 5 GCSE's at grade 5 and above

# Chemistry A Level

Have you ever wondered; "How do fireworks work?", "where does medicine come from?", "why is everyone going on about global warming and the ozone?". Come and find out with this real world, application of knowledge based course.

The structure of the course is designed to promote a love for Chemistry through developing the essential key skills required by the scientists of the future.

## Key skills required and developed

Basic and applied maths, data interpretation, problem solving, note taking, research, communication, teamwork, measurement, analysis, evaluation, observation, time management.

## Support and guidance given throughout course

Books, folders, lab reports are monitored on a weekly basis with feedback and improvement questions given. All lesson materials are uploaded to Google Classroom and students are encouraged to review these regularly. All Chemistry teachers encourage students to make use of the 'open door' policy. As A Level students, your teachers expect you to come and ask for help whenever you need it!

### What will you study?

Content is in six modules:

Development of practical skills in chemistry

Foundations in chemistry

Periodic table and energy

Core organic chemistry

Physical chemistry and transition elements

Organic chemistry and analysis

### Examinations

(all at end of year 13)

**Paper 1:** Periodic table, elements and physical chemistry (2 hour 15 mins)

**Paper 2:** Synthesis and analytical techniques (2 hour 15 mins)

**Paper 3:** Unified chemistry (1 hour 30 mins)

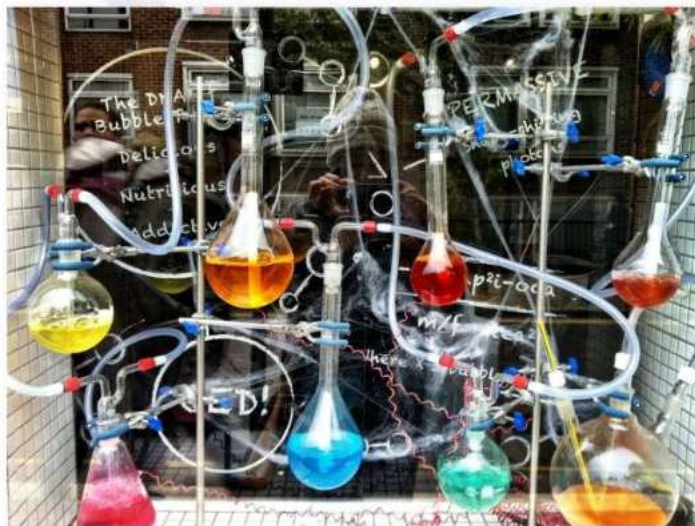
Practical skills require a teacher-assessed component, Practical Endorsement in Chemistry, which will be assessed throughout the 2 year programme and reported separately.

## Where could this take you?

The successful completion of this course allows you to pursue many careers and higher education choices such as Medicine, Dentistry, Veterinary, Forensic Science/Investigation, Pharmaceuticals, Biochemistry, Chemical Engineering, Environmental Health, Patent Lawyer, Nuclear Industry, Oceanography, Radiography and many more. It also gives you the skills to be a highly sought after recruit in almost all walks of life. High level Chemistry qualifications are well regarded by universities and employers as they demonstrate a good grasp of key transferable skills such as critical thinking, problem solving, logical processes and evidence evaluation.

## Entry Requirements

- Grade 6 in GCSE Science
- Grade 6 or above in Mathematics and English Language
- 5 GCSEs at grade 5 and above



# Physics A Level

If you are interested in learning about our universe, from the smallest entity within it to the universe itself, then A Level Physics is for you. This content led approach allows you to develop your knowledge and understanding of the laws of physics and apply them to solve problems on topics ranging from sub-atomic particles to the universe. This course will also develop your practical skillset, where relationships between quantities defined by laws are investigated and analysed.

## Module 1 – Development of practical skills in Physics

- 1.1 Practical skills assessed in a written examination
- 1.2 Practical skills assessed in the practical endorsement

## Module 2 – Foundations of Physics

- 2.1 Physical quantities and units
- 2.2 Making measurements and analysing data
- 2.3 Nature of quantities

## Module 3 – Forces and motion

- 3.1 Motion
- 3.2 Forces in action
- 3.3 Work, energy and power
- 3.4 Materials
- 3.5 Momentum

## Module 4 – Electrons, Waves and Photons

- 4.1 Charge and current
- 4.2 Energy, power and resistance
- 4.3 Electrical circuits
- 4.4 Waves
- 4.5 Quantum physics

## Module 5 – Newtonian world and Astrophysics

- 5.1 Thermal physics
- 5.2 Circular motion
- 5.3 Oscillations
- 5.4 Gravitational fields
- 5.5 Astrophysics and cosmology

## Module 6 – Particles and medical Physics

- 6.1 Capacitors
- 6.2 Electric fields
- 6.3 Electromagnetism
- 6.4 Nuclear and particle physics
- 6.5 Medical imaging

## Support

The course is challenging and requires individuals to work hard both inside and outside of the classroom. There will be five hours of direct teaching per week. We expect students to complete at least 1 hour of independent study for every hour taught in class. All teacher resources, homework tasks, tests, and mark schemes are uploaded to Google Classroom. Students should seek support when they need it outside of lessons; the Physics teachers have an open door policy, meaning you can go to them at any time for support, either in person or by email/Google Classroom.

## Assessment

As with any A Level course, the majority of assessment will be external (written exam), although performance in practical tasks will also be reported.

## There are three examinations

**Modelling physics** - 100 marks, 2 hours 15 minutes (written paper)

**Exploring physics** - 100 marks, 2 hours 15 minutes (written paper)

**Unified physics** - 70 marks, 1 hour 30 minutes (written paper)

## Progression

Traditionally A Level Physics students' progress to University. Being a facilitating A Level, it can provide entry not just to Science degree courses, but also a wide range of political, economic and engineering based qualifications.

## Entry Requirements

- Grade 6 or above in GCSE Science
- Grade 6 or above in Mathematics and English Language
- 5 GCSEs at Level 5 and above





# Psychology A Level

If you are interested in the science behind what people do and why they do it, then Psychology is the subject for you! Psychology is 'the science of human mind and behaviour', looking at people as individuals and in groups, and attempting to explain a whole range of thoughts, behaviours and actions.

A Level Psychology is an excellent preparation subject for a degree course in Psychology and for a wide range of careers, including; education, clinical psychology, occupational and forensic psychology, medicine, counselling, criminology, mental health nursing, social work, cognitive science, and advertising. A Level Psychology is a two year course, assessed through examination only. At the end of the second year of study you will sit three exams. You will follow the AQA examination board.

## Skills Required to Study Psychology

Science – Psychology is a science and therefore based on scientific principles and research.

Knowledge and retention – within Psychology you will learn about a range of theories. You must be able to recall how these theories work and explain those using key terms.

Application – you will need to apply your learning to unseen material. You will need to have good knowledge of the underpinning theories in order to explain real life behaviour.

Analytical skills – ability to evaluate theories and studies.

Maths – you will have to carry out practical experiments and be able to analyse data using a range of statistical tests.

### Paper 1: Introductory Topics in Psychology

(50% of AS, 33.3% of A Level)

Social influence (conformity, compliance and obedience)

Memory and forgetting (short-term memory, long-term memory, types of memories)

Attachment (attachment types in infants, deprivation and privation studies)

Psychopathology (definitions of abnormality)

### Paper 2: Psychology in Context

(50% of AS, 33.3% of A Level).

Approaches in psychology (biological, behaviourist, psychodynamic, cognitive, humanistic)

Biopsychology (how the brain influences behaviour)

Research methods (psychological studies and experiments and methods used to obtain results).

Issues and debates (ethics, free-will, nature vs. nurture)

### Paper 3: Issues and Debates in Psychology

(33.3% of A Level)

Relationships (why and how they form and how they break up).

Schizophrenia (symptoms, causes and treatments)

Forensic psychology (applying psychology to crime)

## Where could this take you?

Clinical, health, occupational, developmental (child) and sport psychology; medicine, nursing, midwifery, mental health nursing, social work, teaching, advertising, media, criminology, criminal justice, international relations, research scientist, animal management and behaviour.

## Entry Requirements

- Grade 5 or above in GCSE Science
- Grade 5 or above in Mathematics and English
- 5 GCSEs at grade 5 and above

# Applied Science BTEC

## Extended Certificate in Applied Science (Single)

### Overview of the Course - What can students expect?

Students enrolling on this course can expect:

- High engagement practical work geared towards providing the skill set needed for further study of science or working in the scientific industry.
- The ability to select an optional module to study that interests and benefits their progression the most.
- Lower examination pressure as 50% of the course is internally assessed and only 25% of the final grade is based on the final exam, with the other 25% coming from an externally assessed piece of coursework.
- Preparation towards working in the Scientific Industry with strong links to Medical Science.

### Breakdown of assessment : Single

The course consist of 4 units:

Three mandatory units:

Unit 1: **Principals and Applications of Science:** External Exam

Unit 2: **Practical and Scientific Procedures and Techniques:** Internal Assessment

Unit 3: **Science Investigation Skills:** Externally Assessed Practical Controlled Assessment

One optional unit to be selected from:

Physiology of Human Body Systems: Internal Assessment

Biological Molecules and Metabolic Pathways: Internal Assessment

Genetics and Genetic Engineering: Internal Assessment

Diseases and Infections: Internal Assessment



### Where could your course lead to?

This course leads into a variety of further education courses within the fields of science and laboratory work.

When Combined with other A Levels and BTEC qualifications this course can lead to:

Applied Science, Maths, Physics or Design Technology can progress on to engineering related courses.

Applied Science and National Extended Certificate in Sport can progress on to sport science and physiotherapy courses.

Applied Science and National Extended Certificate in Health and Social Care can progress onto some Nursing and Midwifery Courses.

Applied Science and Geography can progress onto Environmental Science Courses.

Please also check [www.ucas.com](http://www.ucas.com) for specific entry requirements for the above subjects.

### Entry Requirements

Students enrolling on the BTEC Applied Nationals in Applied Science will need the following qualifications as a minimum:

- Grade 4 or above in GCSE Science
- Grade 4 or above in Mathematics and English
- 5 GCSEs at grade 4 and above







# Health & Social Care BTEC

## Extended Certificate in Health & Social Care

### Who is this qualification for?

The Pearson BTEC Level 3 National Extended Certificate in Health and Social Care is for students who are interested in learning about the health and social care sector as part of a balanced study programme. It is equivalent in size to one A Level and supports access to a range of higher education courses.

### What does this qualification cover?

The qualification consists of 3 mandatory or compulsory units and one optional unit as outlined below.

#### Breakdown of assessment

The course consists of 4 units;

#### Three mandatory units:

**Unit 1:** Human Lifespan Development

**Unit 2:** Working in Health & Social Care

**Unit 5:** Meeting individual Care and Support Needs

#### One optional unit:

**Unit 14:** Physiological Disorders and their Care

#### Types of Assessment:

Assignment which is set and marked internally (Unit 5 and 14)

Written Exam which is set and marked externally (Unit 1 and 2)

#### How is the course assessed?

The course is assessed both externally and internally, through externally marked exams or by assignments that are marked in school.

The qualification grade is an aggregation of a learner's unit level performance across the four units of study over the two years.

At the end of the course you will be awarded a

**PASS**  
**MERIT**  
**DISTINCTION**  
or **DISTINCTION\***

### What could this qualification lead to?

It should be taken alongside two other subjects such as an A Level in Biology and further Level 3 qualifications, which could lead to a BSc (Hons) in Nursing or a BTEC National Extended Diploma in Applied Science, which could lead to a BSc (Hons) in Biomedical Science, amongst other degree courses such as Primary Teaching and Educational Studies.

### What skills do you need to be successful in this course?

- the ability to learn independently and meet deadlines.
- the ability to research actively and methodically.
- to be able to give presentations and work co-operatively.
- the ability to write effectively.
- the ability to communicate effectively.

### Entry Requirements

- Grade 4 or above in GCSE Science
- Grade 4 or above in Mathematics and English
- 5 GCSEs at grade 4 and above



*Studying Health and Social Care in Year 11 is not a requirement of the course but it will help.*



## English Language A level

Studying English Language at Lipson provides you with a natural progression from your GCSE study of English and encourages you to develop your interest in and appreciation of English, through learning about its structures and its functions, its developments and its variations. The course allows you to develop your ability to express yourself in speech and writing, producing texts for different audiences, purposes and in different genres. In Year 12 the course focuses on written and spoken language and different contexts of language, looking in particular at gender and power. There is also an element of original writing based on a topical language issue, which is assessed by an internal exam in Year 12, with an external exam in Year 13. Topics in Year 13 are child language acquisition, language in the media and language variety and change over time. The A Level exam will test original writing; and there is a coursework element at A Level – independent language research – an investigation into an area of language and a linked production of an academic poster.

### What will you study?

This A Level is a two year option with all of your formal assessments taking place at the end of the second year. The assessments are detailed below.

#### Paper 1: Language, the individual and society

- Textual variations and representations
- Children's language development (0-11 years)
- Methods of language analysis are integrated into the activities

#### Paper 2: Language diversity and change

- Language diversity and change
- Language discourses
- Writing skills

#### Coursework Assessment

- Language Investigation
- Original Writing



### Where could this take you?

English Language is a flexible and adaptable subject so future career opportunities are extensive. The subject combines well with many others in both the Arts and Sciences, and is particularly suited to Modern Foreign Language combinations, Sociology and Psychology. University Admission Tutors and employers look favourably upon students who have studied A Level English Language, knowing they will have good oral and written communication ability and have developed useful skills of analysis and interpretation. Careers which can be entered with an English A level or an English degree are many and varied and include Public Relations, management, research, consultancy, publishing, medicine, teaching, journalism, law, media and advertising.

### Entry Requirements

- GCSE grade 6 or above in English Language
- 5 GCSEs at Level 5 or above

# English Literature A Level

Studying literature at Lipson involves the development of sophisticated reading skills and of an ability to place literary texts in their wider intellectual and historical contexts. It also requires you to consider the critical processes by which you analyse and judge, to learn about literary form and technique, and to evaluate various approaches to literary criticism and theory. You will enhance your knowledge of society and how writers reflect this in their texts.

## What will you study?

This A Level is a two year option with all of your formal assessments taking place at the end of the second year.

### Exam 1: Love Through The Ages

One poetry collection, one prose text (one written pre 1900), one Shakespeare play and two unseen poems.  
3 hours

Open Book for Section C only

Section A: Shakespeare passage based question

Section B: Unseen Poetry (comparing two unseen poems)

Section C: Comparing Texts, one essay question

### Exam 2: Texts in Shared Contexts - Modern Times, 1945 to present day

One prose text, one poetry collection and one drama text (one of which is post-2000)  
2 hours and 30 minutes

Open book exam

Section A: One essay question on set text.

Section B: One compulsory question on an unseen extract

One essay question linking two texts

### Non-Exam Assessment: Independent Critical Study

Comparative critical study of two texts of your own choice; at least one written pre 1900.  
One extended essay (2500 words and a bibliography)

## Where could this take you?

Many career opportunities are open to you with A Level English Literature, such as Publishing, Media, Public relations, Marketing, Law, Business and Education and Journalism. This course will also enable you to progress onto a degree course in English Literature or related studies.

## Entry Requirements

- GCSE grade 6 or above in English Language
- GCSE grade 6 or above in English Literature
- 5 GCSEs at Level 5 or above

You will read a wide range of texts over the course of the two years, therefore it is important that you enjoy reading and are keen to broaden your literary horizons. Possessing good inference and analytical skills is also central to succeeding in your study of Literature. Finally, the skill of structuring a coherent essay is one that you will develop over the course of the two years.





# French A Level

The life long rewards to be gained from learning a modern foreign language are phenomenal and a skill which can be easily built on and honed in this age of communication. Whether in your professional life, in higher education or for practical purposes (holidays etc.), the skill will stand you in good stead.

## What will you study?

This A Level is a two year option with all of your formal assessments taking place at the end of the second year across 3 exams:

**Paper 1** - Listening, reading & writing. (50%)

**Paper 2** - Writing (20%)

**Paper 3** - Speaking (30%)

## CORE CONTENT

You will cover a variety of topics surrounding the social, political & artistic trends of the French-speaking world as well as more in-depth French language and grammar.

### 1 Social issues and trends

- Aspects of French-speaking society: current trends  
La famille en voie de changement, La « cyber-société » et Le rôle du bénévolat
- **Aspects of French-speaking society: current issues**
- Les aspects positifs d'une société diverse, Quelle vie pour les marginalisés?  
Comment on traite les criminels?

### 2 Political and artistic culture

- **Artistic culture in the French-speaking world**  
Une culture fière de son patrimoine culturel, La musique francophone contemporaine, Cinéma – le septième art
- **Aspects of political life in the French-speaking world**  
Les ados, le droit de vote et l'engagement politique, Manifestations, grèves – à qui le pouvoir?  
La politique et l'immigration

### 3 Grammar

**4 Works:** one French literary text and one French film.

**5 Individual Research Project:** Research & present, in French, a project on an area of personal interest relating to a country or countries where French is spoken.

## Where could this take you?

Language skills can lead directly into a career in translating, interpreting or teaching, but are also hugely in demand in areas such as hospitality, law, publishing and business services. Many big employers are multinational organisations and are keen to recruit candidates who are willing to work overseas and can liaise effectively with international colleagues. Studying modern languages is likely to develop interpersonal and communication skills that graduate recruiters value, as well as other key strengths. This course will also enable you to progress onto a degree course in French or related studies.

## Entry Requirements

- GCSE grade 6 or above in French
- 5 GCSEs at Level 5 or above (including English Literature and Maths)



# Mathematics A Level

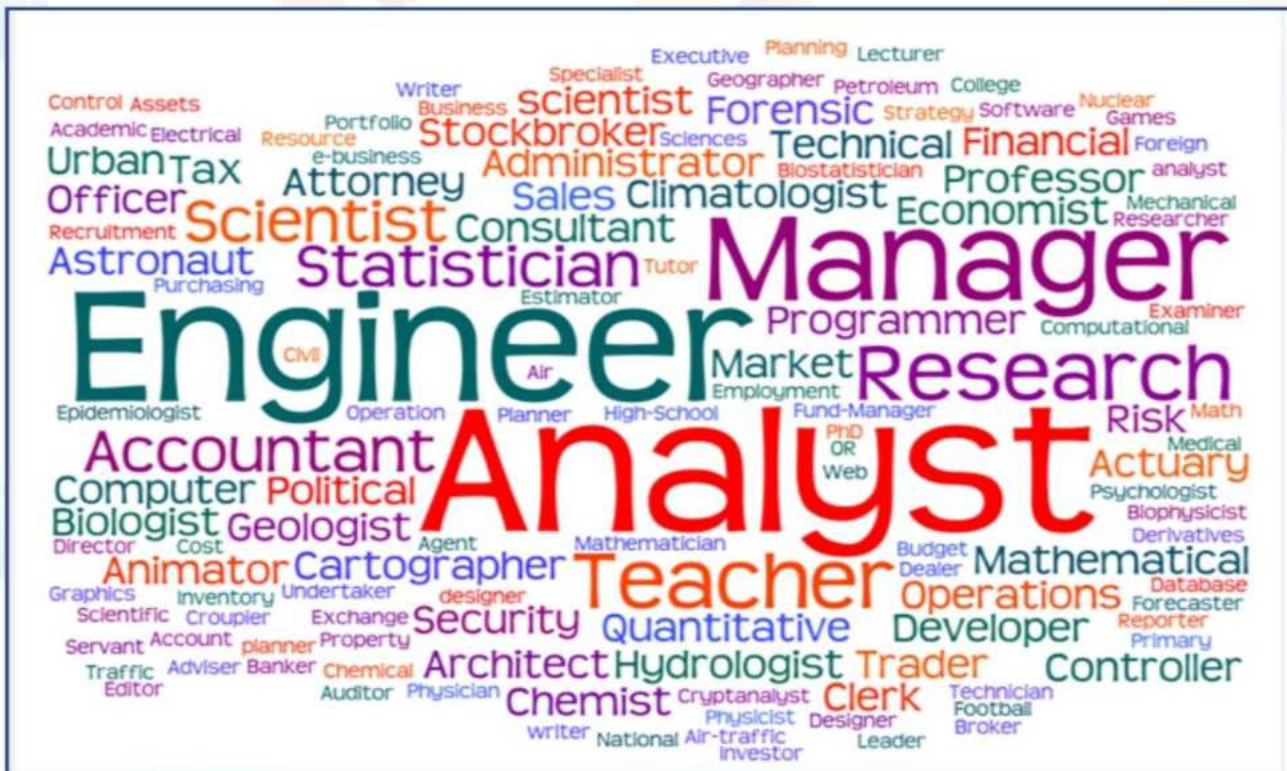
A Level Mathematics is a mixture of pure (core) mathematics and applied mathematics. The course consists of mathematical thinking, statistics and mechanics and subsequently has clear links with a number of additional A Level courses. Mathematics is a requirement for several university degrees and is a well regarded A Level choice across many Russell Group universities including Oxbridge. With mathematics A Level you will be benefitting from:

- a stimulating and challenging course that develops logical thinking;
- opportunities to develop key employability skills;
- excellent preparation for a wide range of university courses and a versatile qualification that is well-respected by employers and higher education.

## Skills Required

A resilient, inquiring mind that thrives on problem solving and is confident with playing with numbers.

## Where can this course take you?



## Breakdown of assessment

Three, two hour examinations at the end of the second year including pure maths, statistics and mechanics. All exams are calculator papers.

## Entry Requirements

- Level 7 or above in Mathematics GCSE
- 5 GCSEs at Level 5 or above

For extremely capable students (with a Grade 8 or 9) there is the opportunity to take the Further Mathematics A Level course. This would involve a considerable amount of independent study and can only be undertaken after discussion with Ms Lodge and Ms Hykin.



# Geography A Level

Geography is all around us and its study allows us to gain an understanding of the global issues that face us at the present time and of our place as individuals within an increasingly complex world. If you have an enquiring mind and want to explore vital 21st Century issues that matter, such as globalisation, debt, environmental change, and management of the world's resources then this is the course for you.

A Level Geography consists of a 2 year course with all examinations at the end of Year 13.

## What will you study?

### Component 1 Physical Geography (40%)

Three Themes:  
Water and Carbon Cycles  
Coastal Landscapes  
Natural Hazards

### Component 2 Human Geography (40%)

Three Themes:  
Globalisation  
Changing places  
Population and the Environment

### Component 3 (20%)

Students complete an investigation which includes data collection. It must be an individual investigation where a 4,000 word report is produced.

## Where could this take you?

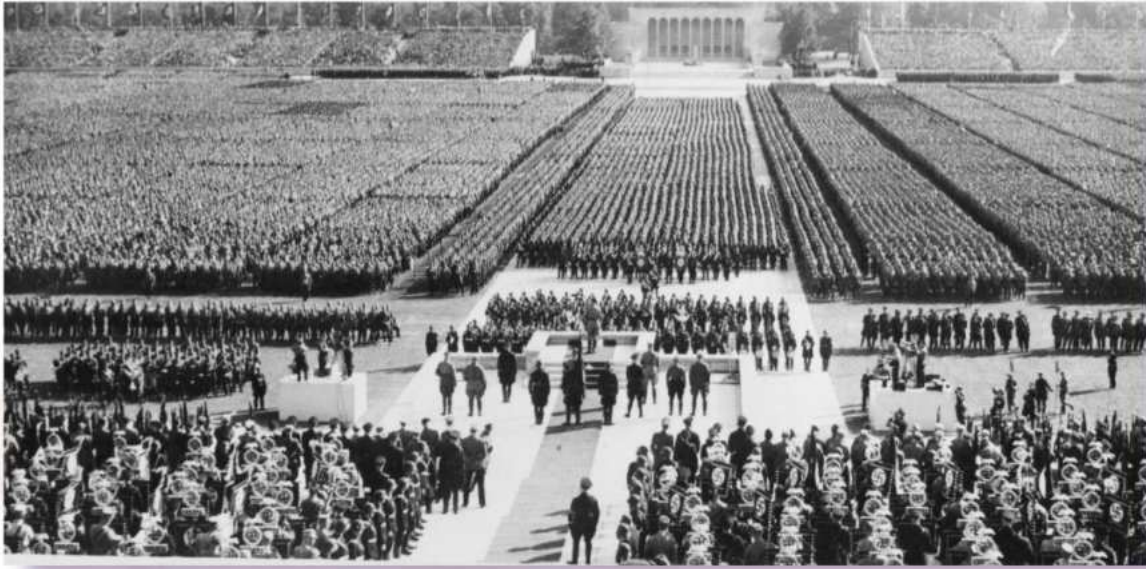
Geographers acquire a wide range of skills, such as the ability to analyse data, write reports or to understand the attitudes and values of decision making. Geographers are good at networking and teamwork and this Sixth Form department is at the forefront of using ICT in learning and teaching. Geography is considered a facilitating A Level by all universities and is therefore an excellent subject for many degree courses.

**Examples of possible student careers are:** Agriculture, Archaeology, Countryside Management, Development Studies, Earth Sciences, Ecology, Economics, Environmental Studies or Science, Land Economy, Landscape Architecture, Meteorology, Mining, Oceanography, Planning, Politics, Surveying Transport Studies, Tourism, Urban Studies, Law, Media Studies, Medicine, Biochemistry plus many others.

## Entry Requirements

- Level 6 or above in GCSE Geography
- Level 6 or above in English
- 5 GCSEs at Level 5 or above





## History A Level

A Level History is a two year course. We follow the OCR History A H505 specification and we study the following units:

**Unit 1:** England 1445-1509, Lancastrians, Yorkists and Henry VII including the War of the Roses. (25%)

This will involve the study of the dramatic events of the Wars of the Roses and the controversy surrounding the iconic Richard III. It will also deal with the rise of the Tudor family.

**Unit 2:** Democracy and Dictatorship in Germany 1919-1963 (15%)

This will involve the study of the Weimar Republic and the rise of the Nazis. We will examine the 1930s under Nazi rule and the impact of World War Two. Finally, we will investigate the division of Germany in the Cold War.

**Unit 3:** Civil rights in the USA 1865-1992 (40%)

This unit takes the form of a thematic paper which addresses cause and consequence and change and continuity through the period of nearly 150 years. We will investigate four separate aspects of civil rights - the struggle for equality by black Americans, native Americans, women and the fight for working rights by the working class.

**Unit 4:** Topic based essay - an investigation. (20%)

Students can select their own topic for investigation and have to use a range of both sources and interpretations to reach supported judgments and involves the construction of a 3000-4000 word essay.

There are three final examinations which total 80% of the final marks. 20% of the marks are awarded for the coursework element which consists of an investigation into a topic chosen by the student and presented in the form of an essay.

The course is taught by four specialist teachers. It will involve looking at evidence and examining the different interpretations of the historical events we address. There will be seminars and debates as well as written reports and extended essays. This is an academic course and therefore students must be prepared to read widely and should enjoy writing. The coursework element will enable students to investigate a chosen question and will require the use and evaluation of both sources and inspirations - it offers the opportunity to be an historian!

Throughout the course students will be required to complete extended essays. Teachers will model these and students will learn how to write history in the formal, academic style which is so important for success at this level. Teachers will also provide personal feedback and the use of DIT (Dedicated Improvement Time) is an important feature of A Level lessons.

A Level History is a well-respected qualification and is regarded as a facilitating subject by universities. It is a valuable subject for students who want to go on to study Law and other Humanities degrees. However, the main reason to consider History A Level is because you have an interest in it and enjoy it.

### Entry Requirements

- GCSE Level 6 or above in History
- GCSE Level 6 in English
- 5 GCSEs at Level 5 or above



## Politics A Level

### What will you study?

Students will study UK politics and UK government, which will give them a core knowledge and understanding of the UK's political system through interesting lessons and engaging wider reading. This will include analysis of democratic participation, political parties and changes to voting behaviour. Students will then develop this knowledge and understanding at A Level, and study the core political ideas of conservatism, liberalism and socialism. Students will also complete a comparative section comparing UK politics to the USA's political system.

### Course Outline

**Component 1: UK Politics: Written examination** - 2 hours 33% of the qualification 84 marks.

Study includes assessing the UK's political parties and political systems whilst evaluating changes to themes such as voting behaviour and the development of media and its impact on UK politics. Students will also learn about the core political ideas of conservatism, liberalism and socialism.

**Component 2: UK Government: Written examination** - 2 hours 33% of the qualification 84 marks.

Study included assessing and evaluating the make up, methods and effectiveness of institutions such as the House of Commons, House of Lords, Prime Minister and the executive. Students will also learn about a non-core political idea, such as feminism or anarchism.

**Component 3: Comparative Politics** - Written examination: 2 hours 33% of the qualification 84 marks.

Study will include the US Constitution and federalism, US Congress, US presidency, US Supreme Court and civil rights, democracy and participation, comparative theories to those used in the UK.

### Where could this take you?

All AS and A2 courses provide transferable knowledge and skills that prepare learners for progression to university. The transferable skills that universities value include:

- Evaluative skills
- Essay Writing Skills
- Source Analysis and Interpretation Skills
- Research/ Evaluation of Evidence

A Level Politics can also prepare participants with the knowledge and qualifications needed to find employment in fields such as; political journalism, political writer, civil servant, Government social research officer, Member of Parliament, politicians assistant and many more.

- Politics
- Journalism
- Political Advisor/Assistant
- Public/private Sector Work e.g. Local Councils or Charities

### Entry Requirements

- Grade 6 or more in an English subject (Language or literature);  
OR
- Grade 5 or 6 in a Humanities subject (History, RS or Geography)





# Religion, Philosophy & Ethics A Level

Religion, Philosophy and Ethics is all about questions. We attempt to tackle some of the hardest; most important and most interesting questions that a human being can face:- 'Can we prove that God does not exist?'; 'What makes a good person?'; 'Why would a loving god allow the Holocaust and Tsunami to happen?'; 'Can you accept the Big Bang theory and believe in God?'; 'Does everyone have the right to life?' and 'Can the taking of an innocent life ever be justified?' We will examine these questions from a personal and academic perspective and the best thing is that your point of view will always count!

## Where your course can lead to

Students who succeed in this course will develop many significant and marketable skills including the ability to analyse and critically examine difficult concepts. They will also be able to express their own ideas clearly and effectively verbally and in written form. The course is recognised as a highly academic subject which is excellent preparation for a wide range of university courses and careers including law; education; medicine; social work; the media; management and both the emergency services and armed forces.

## Skills required to succeed on course:

Students will need to have an ability to read and think independently. You will be expected to read books and journals; get involved in debates; put forward your own opinion; take part in group and individual research tasks and at times, even lead the lessons yourself by giving presentations. You will be expected to write essays regularly as this is how you will be assessed in the examinations. These essays are based on two clear assessment objectives.

## Support and guidance given throughout course

After each unit of work students will complete at least one essay and as a result will be given detailed feedback on how to improve. You will be taught using a variety of methods and learning will not always be based in the classroom. The RS department has an open door policy for A Level students and will arrange a suitable time to support you with any homework or revision if you feel you need extra help.

## Overview of the course - what can students expect:

### Component 1

Philosophy; Religious experience; Problems of evil and suffering; Philosophical language; Arguments for the existence of God.

### Component 2

Ethics; evaluates a wide range of ethical systems that define good behaviour by applying a variety of issues including: Abortion, Euthanasia, Capital Punishment, Homosexuality and War.

### Component 3

Christianity; an in-depth study into the beliefs and practices of Christianity.

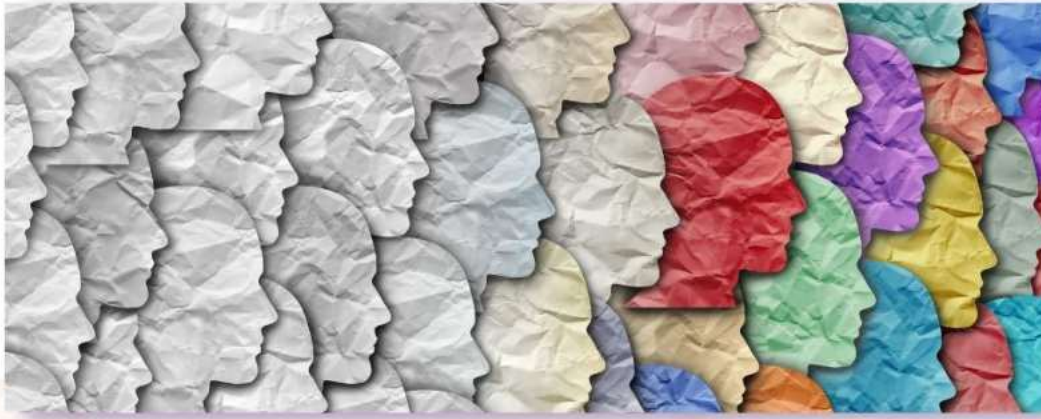
## How you will be assessed

You will be assessed regularly by your teacher. These teacher assessments tend to take the form of timed essays, student led presentations and group work. You will be assessed formally by three, two hour exams at the end of the A Level course. No coursework.

## Entry Requirements

- Level 5 or above in English
- Level 5 in a Humanities subject is preferred
- 5 GCSEs at Level 5 or above





## Sociology A Level

Sociology is the systematic study of society and the groups within it. It is about looking at the world you live in through a different lens to try to understand some of the problems and issues that face society and how society has changed through the generations. It is about looking at the experiences of different social groups and trying to understand their views and the structural causes of their experiences.

In your study of sociology, you will develop skills of objective and analytical writing, critical thinking, discussion and debate, as well as how to look at a situation from multiple viewpoints. You will need to be able to question assumptions about society and the rules by which we live our lives as well as examine how our experiences may be different to others and may shape the choices and decision that we make in our own lives.

A Level Sociology consists of a 2 year course with all examinations at the end of Year 13.

### What will you study?

#### Topic 1 Families and households

Everyone will have had an experience of family in one shape or another and this unit helps you to understand the different types of family that exist in the world and the UK today. You will understand the social and demographic changes that have occurred and led to these changes and the increase in family diversity and the impact this has had on wider society.

#### Topic 2: Education

At this stage of your education you have much more choice over what you study. This unit helps you to understand the processes within the education system that may have influenced your decisions and the path that you have taken. It will also help you to understand the processes within schools and the impact that can have on educational achievement.

#### Topic 3 Beliefs in society

It is suggested that the UK today is a secular society, however in this unit you will consider if that statement is really true, or if in fact religious belief and practice has become more private so it just appears that religion no longer plays a role in society. This unit will also help you to understand the role that religion plays in an individuals lives as well society in general. The study of different religious groups will also help you to understand why people join these groups as well as the similarities and difference between them.

#### Topic 4 Crime and Deviance

The criminal justice system impacts almost all aspects of our lives, including controls on our behaviour, telling us what we can and cannot do, to punishing us when we violate norms of behaviour. This unit will help you to understand the impact of the criminal justice system and the role it plays in maintaining our society. You will also look at how the criminal justice system impacts different groups in society

#### Topic 5 Theory and Methods

This unit provides the background and basis for all sociological study. It provides the bones on which you will be able to build up your sociological knowledge and understanding of the social world. This unit will take you through the main sociological perspectives and how they view the social world as well as the different ways that sociologists conduct research into social phenomena. This will be built upon as we go through each of the topics we study.

#### Careers

Sociology is a good umbrella subject, meaning that it supports a number of careers and degree courses as one of the key skills of a sociologist is to look at the world in an objective and critical way.

# Fine Art/Graphic Communication 3D/Textiles A Level

## This specification includes:

Art, craft and design, Fine art, Graphic communication, Textile design and Three-dimensional design. In this way students can decide which specification suits their skill set and interests. This allows students to create work which is best fitted to their university's entry requirements.

The creative AQA A Level leads into many creative industry disciplines, such as: Advertising, Animation, Archaeology, Architecture, Teaching, Art Therapy, Ceramic Design, Sculpture, Graphics, Computer Game Design, Conservation, Textile or Fashion Design, Art Technician, Display or Interior Design, Industrial Design, Film Production, Theatre Production. Such career choices will sometimes require students to complete a Diploma in Foundation Studies (Art and Design).

- Painting, drawing and working in a range of 2D mediums
- Textiles
- Print making
- Sculpture
- Installation
- Conceptual art
- ability to respond to an issue, concept or ideas
- historical and contemporary developments in the production of art as well as different styles and genres
- how images and artefacts relate to social, environmental, cultural and/or ethical contexts, and to the time and place in which they were created
- a working vocabulary and specialist terminology that is relevant to their chosen area of study.

## Component 1 - Portfolio worth 60% of the total mark

Each student must include in their portfolio:

- a selection of thoughtfully presented work that demonstrates the breadth and depth of the course of study
- at least one extended collection of work or project, based on an idea, concept, theme or issue. This should demonstrate the student's ability to sustain work from an initial starting point to a realisation. It should include evidence of their ability to research and develop ideas and link their work in a meaningful way to relevant critical/contextual materials. Portfolios may also include:
- critical/contextual work, which could include written material such as journals, reviews, reflections and evaluations, annotations and historical background material. Evidence may be included from books, journals, moving images, photographs, digital presentations and the internet, as well as studies made during a residency, site, gallery or museum visit.
- sketchbooks, workbooks, journals. Alternatively, students may wish to present a series of related images mounted on sheets.
- where appropriate to the student's area of study, test pieces, samples, storyboards, models or maquettes.

## Component 2 - Externally set assignment worth 40% of the total mark

These will consist of a choice of five questions to be used as starting points. Students are required to select one and will be provided with examination papers on 1 February. Following the preparatory period, students must complete 15 hours of unaided, supervised time. The first 3 hours of the supervised time must be consecutive. In the 15 hours students must produce a finished outcome or a series of related finished outcomes, informed by their preparatory work.

The student will develop skills and techniques depending on their chosen field of study.



In order to be successful you need to have a genuine passion for the subject. Although this course demands your time and commitment, we believe you will find the challenges rewarding and fulfilling. This subject provides the ideal platform for any student wishing to pursue the extensive career opportunities in the art and design or creative and visual arts field. It will also appeal to those students who have been successful at GCSE and wish to maintain a creative balance within their studies at A Level.

## Entry Requirements

- Level 5 in GCSE Art preferred
- OR
- a portfolio, 5 GCSEs at Level 5 or above including Level 5 in English

# Art Photography A Level

## Edexcel Photography A level

This creative Photography course has an emphasis on Photography as an art form, focusing on lens-based and digital-media.

You will use the camera as a tool to develop your visual thought processes as well as your creative and critical abilities. The aim of this course is to develop your skills and understanding as a photographer by producing technically sound and visually enhancing photographs.

### Where could this take you?

- Portrait/ wedding and events Photographer
- Commercial Photographer
- Scientific Photographer
- Photojournalist/News Photographer
- Freelance Photographer
- Fine art Photographer

You will be trained to professional standards which could lead on to employment in art, craft and design industries, media and allied sectors, or preparation for entry to higher national or undergraduate degree programmes within the arts and media disciplines. Photography would be a useful A Level to have if you are considering a career in journalism, graphic design, illustration, architecture, forensic science or television as well as photography and other creative subjects.

### Component 1 - Portfolio worth 60% of the total mark

Each student must include in their portfolio:

- Students will explore digital media such as Photoshop and become adept at modern photo editing using both PCs and MACs. Students will explore landscape, portrait, light painting, external flash, film photography and darkroom skills, fashion and many other styles of photography. Students will learn to discuss and analyse the work of others and respond to a variety of starting points and produce high quality projects and final images. Students will have the chance to visit photographic exhibitions, work with professional photographers and exhibit their own work.
- A selection of thoughtfully presented work that demonstrates the breadth and depth of the course of study
- Experimentation working with digital, film based and other ways of exploring a lensed based practice.
- Development of students own narrative within their chosen area of study.
- An in-depth essay that explores an area within the Photography which is directly linked to students portfolio work.



### Component 2 - Externally set assignment worth 40% of the total mark

These will consist of a starting points provided by Edexcel which will be realised on the 1st of February. Students are then required to create a preparatory project. Following the preparatory period, students must complete 15 hours of unaided, supervised time. The first 3 hours of the supervised time must be consecutive. In the 15 hours students must produce a finished outcome or a series of related finished outcomes, informed by their preparatory work.

### Entry Requirements

Level 5 or above in an art based subject  
 Level 5 or above in English  
 5 GCSEs at Level 5 or above





## Creative Media Production BTEC

Students studying Media advance their knowledge of the media market and gain the skills required for a career in the industry. The specialist units support students who want to pursue specific areas of interest in writing, publishing, broadcast media and gaming. Overall, candidates develop an excellent all-round understanding of the challenges and rewards of a career in Media.

### What will you study?

#### **BTEC Creative Digital Media Production - Foundation Diploma (equivalent to 1.5 A-levels)**

Total of 6 Units, 4 of which are mandatory

The course is 60% Mandatory content (Coursework), 40% External assessment (2 exams)

You will complete Units of work that have assessment objectives for which you will be awarded a Pass, Merit or Distinction. The examined element takes the form of one on screen exam and one written exam. Production tasks are at the centre of all learning with the assessment primarily being based on creativity and technical quality.

This course covers an extensive range of media skills including pre-production skills, single camera filming, video editing. You will also cover optional units in research skills, animation, the TV and film industries and communication skills. The course supports further progression in creative media education such as a university degree, an apprenticeship or entry level employment in the creative industries sector.

### You will learn:

- A range of media production skills: print, audio & audio visual
- How to effectively present your work, gather audience feedback and evaluate your own progress.
- You will also learn about media industries, how they are structured and regulated.

### Where could this take you?

This course structure provides you with the skills required to continue your studies at university or immediately pursue a career in the media industry. Journalism, broadcasting, advertising, marketing, illustration, animation, public relations, television and video production are just a few examples of the kinds of courses or careers that studying Media could lead to. This is a dynamic and exciting industry that has much to offer potential new employees. We have had students progress from this course going onto to study at University and work on films such as James Bond 'Skyfall' and most recently the new Star Wars film 'The Force Awakens'.

There are plenty of vocational opportunities on the course allowing you to work alongside industry professionals and make those important contacts and connections, in an industry that thrives on 'who you know' as well as 'what you know'.

### Entry Requirements

- GCSE Media/Level 2 Qualification in Media is preferred OR another Creative Subject – Art/Drama
- 5 GCSEs at Level 4/5 or above including English

# Business Level 3 CTEC

## Why study this course?

The Extended Certificate is for students who are interested in learning about the business sector alongside other fields of study, with a view to progressing to a wide range of higher education courses, not necessarily in business related subjects. It is designed to be taken as part of a programme of study that includes other appropriate qualifications.

## What will I learn?

OCR Business requires applied learning that brings together knowledge and understanding with practical and technical skills. This is achieved through learners performing vocational tasks that encourage the development of appropriate work related behaviours and transferable skills. Transferable skills include communication, teamwork, research and analysis, which are valued in both higher education and the workplace.

### Unit 1: Exploring Business

In this introductory unit you will study the purposes of different businesses, their structure, the effect of the external environment, and how they need to be dynamic and innovative to survive.

### Unit 2: Working in Business

This unit will cover the skills and understanding needed to work effectively within a business environment. This includes arranging meetings, working with business documents, making payments, prioritising business activities and communicating with stakeholders.

### Unit 4: Customers and Communication

In this unit you will learn the purpose, methods and importance of communication in business and the appropriateness of different forms of communication for a range of situations. You will develop the skills that will help you create a rapport with customers and have the opportunity to practise and develop your business communication skills.

### Unit 5: Marketing and Market Research

In this unit you will learn how marketing plays a vital role in ensuring the business sells the right products, at the right price, in the right place, using the most suitable promotion methods. You will gain an in-depth understanding of primary and secondary market research methods used to inform marketing decision-making and any constraints on marketing activities.

### Unit 8: Introduction to Human Resources

In this unit, you will gain an overview of the HR function and learn about factors affecting human resources planning. You will understand the importance of motivating and training employees to achieve their potential and be able to assess the effectiveness of training and development. You will learn how to measure employee performance.

## What could this qualification lead to?

The qualification carries UCAS points and is recognised by higher education providers as contributing to meeting admission requirements for many courses if taken alongside other qualifications as part of a two year programme of learning. It will support entry to many higher education courses. The qualification can also support progression to employment directly, or via an Apprenticeship.

## Entry Requirements

- 5 GCSEs at Level 4/5 or above including English



# Engineering Level 3 BTEC

## Why should I study this subject?

This subject is ideal if you would like to study a vocational subject in addition to other BTECs and A-level qualifications such as Science, Maths or IT and have an interest in either employment or further study in the engineering sector, perhaps in a higher apprenticeship at 18 or progressing onto a degree in a technical or scientific subject.

BTEC Engineering offers a great foundation for entry into mechanical, electrical or marine engineering careers from technician level and a good starting point for higher education qualifications in this field. If you know you would like to enter a technical career but unsure which field to go into, this subject would also give a good foundation to help inform your choices for post 18.

## What will I study?

This is a course which focuses on the foundation knowledge and skills to progress into engineering careers and progression to further study in the field.

**Unit 1:** Engineering Principles - Maths and Science

**Unit 2:** Delivery of Engineering Processes as a Team

**Unit 3:** Engineering Product Design and Manufacture

**Unit 4:** Fabrication Manufacturing Processes

## What can Engineering do for me?

This subject is a good foundation for progression onto further specialised training or higher education in engineering related subjects. Many of our students have gone on to study degree courses in Engineering at university.

It is also a great entry level qualification for any practical job, trade, higher apprenticeships, or further engineering and construction courses such as NVQs, City and Guilds.

## How will I be assessed?

Assessment will be through coursework assignments for two units in addition to one exam and one externally marked non exam assessment (timed task).

## Exam Board

**Edexcel:** Pearson Level 3 BTEC National Extended Certificate in Engineering Equivalent in size to 1 A-Level taught over two years.

## Entry Requirements

- GCSE grades 5 in Maths and Science a minimum

It is a level 3 technical qualification so there is a high degree of technical, written, science and maths content mixed with some practical assignments and tasks.

For further information contact Mr Neilens



# IT Level 3 CTEC

Level 3 Cambridge Technical Introductory Diploma Information Technology is equivalent in size to one A Level. It is designed for learners who are interested in an introduction to the study of creating IT systems to manage and share information, with a view to progressing to a wide range of higher education courses. Learners will develop a common core of IT knowledge and study areas such as the relationship between hardware and software that form an IT system, managing and processing data to support business and using IT to communicate and share information.

## Support and guidance:

- Students will have 5 hours per week of guided teacher support
- Students will be expected to contribute a further 5 hours per week of independent study
- Students will receive regular feedback on internally assessed work
- Progress is continually monitored against the student target grade
- Additional study time can be offered within the department should a student require further support

## Where can IT take you?

When taken alongside other Level 3 qualifications, including BTEC Nationals or A Levels in complementary or contrasting subjects, such as Mathematics, Physics, Science, Arts or Technology, the qualification gives learners the opportunity to progress to a degree in an IT discipline or a degree where IT related skills and knowledge may be advantageous. This qualification carries UCAS points and is recognised by higher education providers as meeting admission requirements for many relevant courses.

## How will students be assessed?

The units will include:

- **Unit 1** - Fundamentals of IT (unit assessed externally)\*
- **Unit 2** - Global Information (unit assessed externally)\*
- **Unit 6** - Application Design (unit assessed internally)
- **Unit 12** - Mobile Technology (unit assessed internally)
- **Unit 13** - Social Media and Digital Marketing (unit assessed internally)

*\*Learners take the assessment during a defined window and demonstrate understanding through completion of a vocational task. Some external assessments include a period of preparation using set information. External assessments are available once or twice a year and learners can have only one resit attempt during the programme.*

## Skills required to succeed on course

- The ability to learn independently
- The ability to research actively and methodically
- Reading technical texts
- Effective writing
- Analytical skills
- Creative development

## Entry Requirements

- 5 GCSEs at Level 4/5 or above including English
- BTEC Digital Information Technologies Level 2 Pass or above







## Music Practitioner Level 3 RSL

This course is industry related, helping you to gain practical skills which will be essential for pursuing a career in the music industry. The course is a two-year programme that develops your skills in both the business and performance aspects of the music industry.

### Subject: Rock School Level 3 Subsidiary Diploma (*Music Practitioner*)

- You will rehearse in our specialised practice rooms which are fully equipped with PA and backline equipment, or our professional recording suite which is linked to a practice room.
- You will be taught by teachers who still work within the professional music arena from performance artists to musical director to events manager
- As an aspiring musician you will be expected to spend a minimum of one hour per evening practising your chosen instrument. Competition for careers within the music industry is highly competitive and you will need to show enthusiasm, drive, determination and professionalism.
- You will have many opportunities to perform at external events throughout the academic year in order to gain confidence and develop your skills as a performer in front of real audiences.

### What will you learn?

- Planning for a Career in Music
- Improving Instrumental Performance
- Lead Performer—live music performance
- Auditioning for Music
- Rehearsal Skills and Live Music Performance (Externally Assessed)



### How will you be assessed?

Your achievement in this subject is dependent upon excellent attendance, punctuality and effort. You will be assessed regularly on live performances either within the Academy or at external venues and given feedback on your progress. Discussions and presentations are a vital part of our assessment process and you will be expected to contribute to those and reading and listening exercises. You will also be expected to evidence your understanding of career pathways and role within the industry

### Where will it take you?

Many students use the course to progress on to university programmes such as BA (Hons) in Commercial Music, Popular Music, Performance.

### Entry Requirements

- Level 2 BTEC in Music (Merit or above) or GCSE Music (Level 5 or above) or Grade 5 on Voice/Instrument.
- 5 GCSEs at Level 4/5 or above including English

# Performing Arts BTEC

## BTEC Level 3 National Extended Certificate in Performing Arts

### Overview

This two year course acts as an excellent stepping stone for those wishing to pursue a career in the Performing Arts industry. The Extended Certificate is equivalent to one A Level and carries UCAS points.

The BTEC provides students the opportunity to develop a range of performance skills, as well as preparing them for progression into higher education by developing skills in research, critical analysis and extended writing.

Throughout the two years students will explore a range of drama practitioners, performance styles and theatre making techniques. They will be presented with number of opportunities to showcase their work to a public audience as they refine their craft.

### Units

#### Mandatory Units:

**Unit 1:** Investigating Practitioners' Work

**Unit 2:** Developing Skills and Techniques for Live Performance

**Unit 3:** Group Performance Workshop

#### Specialist Unit:

**Unit 21:** Improvisation

### Potential Progression Routes

- Higher Education
- Drama School
- Teacher/Workshop Facilitator
- Actor/Performer
- Director
- Arts Administrator
- Stage Manager
- Talent Agent
- Theatre Technician

### Entry Requirements

- Grade 4/5 or above in Drama or Dance. In the absence of Drama GCSE we would expect students to have some performance experience and extra-curricular engagement within the Performing Arts
- Grade 4/5 or above in English Language
- 5 GCSEs at Level 4/5 or above



# Sport & Physical Activity CTEC

## Single, Double and Triple Award

The Level 3 Cambridge Technical in Sport and Physical Activity course is a qualification that combines both vocational based experience with academic studies which you will study for two years. Studying this stimulating and challenging course will not only lead you to an equivalent of 1, 2 or 3 A Levels in Cambridge Technical Sport, but it will allow learners to choose a pathway that reflects their career or academic aspirations. Studying Sport provides a sound basis for any work related employment, entry into the services or sports related degree courses including; fitness and coaching, sports science, teaching, and outdoor education.

As part of studying this course you would become a valued member of our sixth form sports academy which will allow you to leave with not just a Cambridge Technical in Sport and Physical Activity Award but also additional qualifications to develop your CV and help you develop lifelong employability skills.

### Why do this course and why is different to other Sport courses?

- The course allows learners to choose a pathway that reflect their career or academic aspirations with the maximum qualification equating to three A Levels.
- Become part of our 6th Form Sports Academy, with these additional benefits:

Subsidised personalised PE Kit.

Enhanced enrichment opportunities to a variety of offsite leisure activities.

Gain additional sports based level 1 and young leader qualifications.

Gain additional basic first aid award including CPR.

Gain an additional **16 UCAS points** through completing Higher Sports Leaders Award.

- Students will gain and develop essential skills that are valued by employers and higher and further education institutions.

### How will I be assessed on the course?

Students are assessed through a mixture of internally set assignments in the form of coursework, externally set exams and practical assessments in both performing and leading in sport.

All assessment criteria is based on the achievement of specified learning outcomes. Students' work is graded as Pass, Merit and Distinction for each unit. Students' grades are then equated to an overall grade of Pass, Merit, Distinction and Distinction\* for the course. Students **MUST** pass the mandatory units to pass the course overall.

### Where could this take you?

The Sports industry as a whole is a growing industry and forms a large part of our everyday lives from health and wellbeing to coaching and instruction. There are a vast range of career opportunities open to those with a background in Sports Studies. Sport is a beneficial subject when considering further study in any of the following career opportunities: Personal Fitness Instruction, Exercise Instructor to Music, Teaching and Coaching, Outdoor Adventure Instructor, Leisure industry and Sports Development, Armed and Emergency Services, Sports Therapy, and Physiotherapy.

### Additional Professional Qualification

Students will also have the opportunity to gain the following:

- Level 3 Higher Sports Leaders Award – Additional 16 UCAS points.
- Basic/Level 1 First Aid
- Level 1 NGB and Young Leaders Awards
- Optional Duke of Edinburgh Award

### Entry Requirements and Expectations

- Level 6 or above in GCSE PE or a Merit and above in Cambridge National or BTEC Level 2 Sport
- Level 5 and above in Science and Biology
- 5 GCSEs at Level 4 or above including English and Mathematics

#### SINGLE AWARD - Extended Certificate in Sport

*5hrs Per Week equivalent to 1 A Level*

- Unit 1 - Body systems and the effects of physical activity\*
- Unit 2 - Sports Coaching and Activity Leadership
- Unit 3 - Sports Organisation and Development\*
- Unit 18 - Practical Skills in Sport and Physical Activity
- Unit 8 - Organisation of Sports Events

\*Externally set exams

#### DOUBLE AWARD - Extended Certificate in Sport

*10hrs Per Week equivalent to 2 A Levels*

- Unit 13 - Health and Fitness Testing for Sport
- Unit 4 - Working Safely in Sport, Exercise, Health and Leisure\*
- Unit 5 - Performance Analysis in Sport and Exercise
- Unit 11 - Physical Activity for Specific Groups
- Unit 19 - Sports and Exercise Psychology
- Unit 17 - Sports Injuries and Rehabilitation
- PLUS ALL UNITS IN THE SINGLE AWARD

\*Externally set exam

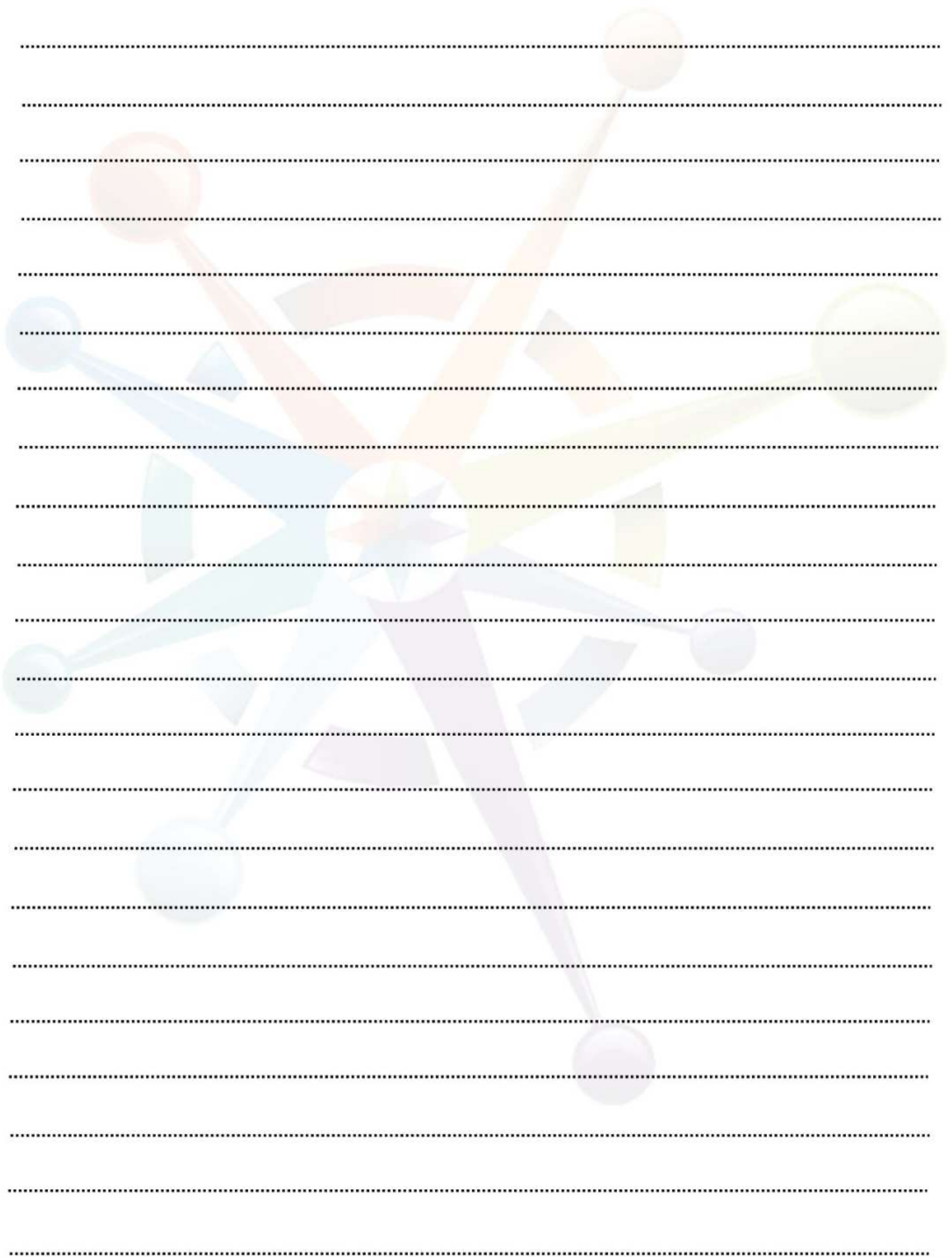
#### TRIPLE AWARD - Extended Certificate in Sport

*15hrs Per Week equivalent to 3 A Levels*

- Unit 21 - The Business of Sport\*
- Unit 12 - Nutrition, Diet for Sport and Exercise
- Unit 14 - Working in Active Leisure Facilities
- Unit 20 - Sports and Exercise Sociology
- Unit 7 - Improving Fitness for Sport and Physical Activity
- Unit 6 - Group Exercise to Music
- PLUS ALL UNITS IN THE SINGLE AND DOUBLE AWARDS

\*Externally set exam

# NOTES



A series of horizontal dotted lines for writing notes, spanning the width of the page.

# Vocational Courses



# Animal Care

**Specification:** City and Guilds Level 3 Advanced Technical Certificate in Animal Management  
City and Guilds Level 2 Extended Certificate in Animal Care  
City and Guilds Level 2 Diploma in Animal Care

**Assessment:** Portfolio of evidence, practical assessments/demonstrations and for the Advanced Technical Certificate two in house examinations and an external examination.

An Animal Care qualification is for anyone who would like to work with animals. The courses will suit those who are just starting out as well as those with some experience. Animal health and welfare is a priority for all of the industry. Each course provides a practical progression route that encourages you to develop your skills and knowledge in subject areas that interest you. Within our Animal Care centre we have a wide range of small animals to support your practical learning ranging from Chinchillas to snakes and lizards to quail. For each unit your assessor observes and asks questions as you perform different tasks, creating a portfolio of formal evidence.

Over the duration of your course, you will be covering all aspects of animal husbandry from feeding to accommodation. You will cover the biological systems as well as animal welfare and breeding. Dependant on the course that you take there are a selection of trips which involve a visit to a working farm and a zoo to look at animal behaviour.

All learners are encouraged to complete a number of hours at a good quality work placement, to enhance their knowledge and skills across the variety of vocational roles such as animal care assistants, zoo keeper assistants, pet retail assistants and to develop employability skills.

**Progression:** Learners have opportunities to progress through the levels and obtain employment within the sector or attend university to train at higher levels. With the job opportunities in the area on the increase and the vast amount of people now owning pets this is a fast growing industry.



# Animal Care

Qualification Name	Internal Progression Opportunities (courses)	External Progression Opportunities Jobs or other providers
Diploma in Animal Care	Progression on to next level, level 3 technical certificate or level 3 work-based animal care	Employment in Pet Shops, Boarding Kennels, Zoos, Riding Stables, Animal Groomers, Veterinary Practices Welfare Centres Grooms/Riding Instructor
Extended Certificate in Animal Care	Progression on to next level, level 3 technical certificate or level 3 work-based animal care	Employment in Pet Shops, Boarding Kennels, Zoos, Riding Stables, Animal Groomers, Veterinary Practices Welfare Centres Grooms/Riding Instructor
Technical Certificate in Animal Management	Progression on to next level, level 3 technical diploma or HE	Employment in Pet Shops, Boarding Kennels, Zoos, Riding Stables, Animal Groomers, Veterinary Practices Welfare Centres Grooms/Riding Instructor
Technical Diploma in Animal Management	Progression on to HE or employment	Employment in Pet Shops, Boarding Kennels, Zoos, Riding Stables, Animal Groomers, Veterinary Practices Welfare Centres Grooms/Riding Instructor. Progression to University Distinction * 56 points, Distinction 48 points, Merit 32 points, Pass 16 points



# Business & IT

## What will I study?

- OCR Level 2 Diploma in Administration (Business Professional)
- OCR Level 2 Cambridge Technical Diploma in IT
- OCR Level 3 Cambridge Technical Introductory Diploma in IT
- Pearson BTEC Level 2 Diploma in Customer Services

## What abilities will I need?

You will need skills in Mathematics and English Language. You will be required to be able to make financial calculations and be able to write with correct grammar and spelling. Administrators often need to work on the telephone and you need to become comfortable with this and be able to speak clearly. Most administration work is now done with a computer and you will need to develop good IT skills.

There are entry level courses for those with few GCSE passes who need to develop basic skills.

Level 2 courses qualify you to do a skilled job once you have had a little more experience. You will need to have completed Level 1 or impress at interview to be accepted on to this level course.

Level 3 courses will qualify you to do a highly skilled or supervisory job once you have had sufficient experience. You will need to have completed a Level 2 course or have good GCSEs to be accepted onto a Level 3 course.

## What opportunities will this course open for me?

This is a hugely varied industry, and you can gain work experience in any business focused setting. Every industry requires employees, who have an ability to complete administration tasks, deliver high quality customer care and who can develop and manage the IT systems that are used.

## Where can I complete my work placement?

Every company will require individuals who have administration, customer service or IT based skills. You will need to approach a company and ask if you can complete a work placement with them.

## What will I wear?

In an office most employees will wear suits, shirts and ties, blouses and skirts/trousers and shoes.







# Business Administration

## Specification: NCFE Level 3

The qualification is a Level 3 Diploma; a level equivalent to an A Level. Many universities will accept it towards entrance on a course, but check with [ucas.com](http://ucas.com) for specific entry requirements and grade criteria.

**OCR Level 2 Diploma in Administration (Business Professional):** This course provides opportunities for progression to further learning within the suite, to other related qualifications or to employment.

**Assessment:** Portfolio of Evidence/Work experience is a mandatory element of this course.

**Programme Outline:** This qualification aims to develop learners' knowledge and skills in carrying out a range of administrative and business support functions. The objective of this qualification is to develop and accredit learners' competence in a wide range of administrative duties. Skills and knowledge developed can be applied to a number of industries and job roles.

## What you will learn:

### Level 2

- To manage your own performance in a business environment
- Maintain and issue stationery
- Contribute to the organisation of an event
- Arrange business travel and accommodation
- To improve your own performance in a business environment
- How to work and communicate in a business environment

### Level 3

- To provide administration support in meetings
- To organise business travel and accommodation
- To work in a business environment
- To communicate in a business environment.
- Contribute to organising events
- Administer finance
- Manage office files
- Analyse business data
- Resolve administration problems



**What to expect:** Qualifications in Business and Administration are assessed by looking at evidence of your work. This can include observation, questions, professional discussion, IT assignments and looking at the work you have produced.

**Progression:** Achieving this qualification can help you work in roles such as a receptionist, administrator, personal assistant, office supervisor, team leader or office manager.

# Business BTEC

**Specification:** Pearson BTEC Level 3 Extended Diploma

**Assessment:** Aural Examination, Coursework, E-assessment, Multiple Choice Examination, Oral Examination, Portfolio of Evidence, Practical Demonstration/Assignment, Practical Examination, Task-based Controlled Assessment, Written Examination.

**Programme Outline:** 2 Year programme with 18 Units of study per course including: The Business Environment, Business Resources, Introduction to Marketing, Business Communication, Business Accounting, Managing a Business Event.

Work experience is a mandatory element of this course.

## What to expect?

The exciting projects and assignments, based on business management situations, help you develop skills in areas such as leadership, communication and planning, alongside knowledge of the issues facing managers today. A BTEC Extended Diploma is equivalent to three A Levels.

**Full Award** – 180 credits over two years

**Progression:** Any Business, Leadership and Management or (BA Hons) Management degrees at University. You can also progress straight into business leadership & management careers.

## Entry Requirements

- 4 GCSEs Grade 4
- Relevant Level 2 qualifications





## Social Media for Business Level 3

**Specification:** City & Guilds Level 3 Diploma in Social Media for Business

**Assessment:** Portfolio of Evidence, Practical Demonstration/Assignment, Task-based Controlled Assessment, Written Examination

**Programme Outline:** These qualifications recognise the rapid growth of the Social Media and Digital Marketing sectors as business tools and has been developed to support learners wishing to enter this evolving environment. The Digital Marketing diploma has been developed in partnership with Agilisys Arch allowing us to engage extensively with industry and employers. The Social Media for Business diploma has two pathways for Marketing and Technical aspects which recognise the skills and knowledge required by a learner to be effective in their chosen career. There are also awards and certificates available. Watch the launch of the Social Media for Business Diploma on You Tube: <http://youtu.be/44V7aZ3p6pk> Work experience is a mandatory element of this course.

**Entry Requirements:** There are no formal entry requirements for this qualification but to optimise their chances of success, learners will typically have 5 GCSE Level 4 and above, including Maths and English or Diploma in Administration (Business Professional) Level 2 or equivalent. Students will be required to attend an interview prior to the course commencement date. This qualification has been designed for learners age 16-19+. Information on UCAS points can be found at [www.education.gov.uk/schools/performance](http://www.education.gov.uk/schools/performance) Learners will develop their skills and knowledge of working in a business environment.

### What to expect?

These qualifications are aimed at learners entering the Social Media and Digital Marketing sector as well as those already working in these areas who are looking to renew their skills with formal training. Social Media in recent years has proven to be an invaluable tool for Business. Used for promotion, marketing and geo targeting along with a multitude of other business benefits, Social Media is an area that is vastly expanding in business. This cutting edge qualification recognises the rapid growth of Social Media as a business tool and is designed to support learners wishing to enter this new and exciting environment.

Social Media in recent years has proven to be an invaluable tool for Business. Used for promotion, marketing and geo targeting along with a multitude of other business benefits, Social Media is an area that is vastly expanding in business. This cutting edge qualification recognises the rapid growth of Social Media as a business tool and is designed to support learners wishing to enter this new and exciting environment.

**Progression:** Can progress into employment across the business sector, some learners may progress onto Higher Education such as a Foundation Degree in Business Studies.

### Entry Requirements

- 5 GCSEs Grade 4 or above
- Relevant Level 2 qualifications

# Vehicle Maintenance & Repair

**Specification:** City and Guilds Level 1/2/3 Light Vehicle Maintenance

**Assessment:** Multiple Choice Examination, Practical Demonstration/Assignment

## Programme Outline Level 2:

If you are interested in working within engineering as a motor mechanic, then this is the place to start. This course will cover the foundation principles of:

- Health & Safety
- Knowledge & Skills for the body repairs
- Removing & fitting body panels
- Minor repairs
- Resistance spot welding
- Work experience

## Programme Outline Level 3:

If you are interested in working within engineering as a motor vehicle repair technician, then this is the follow on course for you. This course will cover the foundation principles of:

- Health & Safety
- Knowledge & Skills with tools in an automotive environment
- Diagnose & rectify engine, chassis & electrical faults
- Fitting & removal of non permanent body parts
- Knowledge of inspection methods
- Skills to identify customer service needs
- Skills in how to make learning possible through demonstration & instruction
- Work experience

## How will the course be delivered?

This is a practical course and the sessions will include tutor-led demonstrations, instruction, online tests, phase tests, course work and repetition.

## Will I need to study or practice outside the classroom?

It is always useful to practice your skills learned between sessions.

## How will I know I'm making progress?

During the first session the tutor will discuss goals and your current level in relation to the course. Based on this assessment, you will agree individual targets which you will record in your individual learning plan (ILP). You and your tutor will review your targets regularly to ensure that you are making progress; these will be written in your ILP

## What will I need for the course?

Personal Protective Equipment which will be supplied.

**Progression:** Progression will be into employment, or an apprenticeship in the engineering sector or further training.





# Marine Engineering

**Specification:** City & Guilds Certificate in Marine Construction, Systems Engineering and Maintenance (QCF) - Level 2/Level 3

**Assessment:** Coursework, E-assessment, Multiple Choice Examination, Oral Examination, Portfolio of Evidence, Practical Demonstration/Assignment, Practical Examination, Task-based Controlled Assessment, Written Examination.

## Programme Outline Level 2:

The units have been tailored into a specialised learning package within an area of interest that delivers the foundations of Engineering. Units are as follows:

- Principles of boat building technology
- Interior installation & fitting out of boats
- Yachts & boatbuilding & sub assembly
- Work experience

## Programme Outline Level 3:

The units have been tailored in to a specialized learning package in an area of interest that delivers the basics of Engineering.

- Health & safety
- Principles of boat construction
- Producing & fitting structural boat components
- Installation & repair of vessel services

## How will the course be delivered?

This is a practical course and the sessions will include tutor-led demonstrations, instruction, online tests, phase tests, course work and repetition.

## How will I know I'm making progress?

During the first session the tutor will discuss goals and your current level in relation to the course. Based on this assessment, you will agree individual targets which you will record in your individual learning plan (ILP). You and your tutor will review your targets regularly to ensure that you are making progress; these will be written in your ILP

## What will I need for the course?

Personal Protective Equipment which will be supplied.

**Progression:** Progression will be into employment, or an apprenticeship in the engineering sector or further training.

# Working with Children & Young People

**Specification:** City and Guilds Level 2 Certificate for the Children and Young People's Workforce

**Assessment:** Coursework, Portfolio of Evidence, Practical Demonstration/Assignment

## Programme Outline:

Our exciting projects and assignments based on childcare related situations help you develop skills in areas such as leadership, teambuilding and safeguarding, alongside knowledge of the issues facing the sector. Join the programme and prepare yourself for employment or further study at university.

## Level 2

One year programme with 13 Units of study, including:

- Child & young person's development
- Safeguarding the welfare of children
- Maintaining and supporting relationships
- Contribute to the support of child development
- Understand partnership working
- Paediatric emergency 1st aid

## Level 3

One year programme with 23 Units of study, based around 4 themes:

- Health and well being
- Legislation, frameworks and professional practice
- Play, development and learning for school readiness
- Professional Development

## Progression

- Career in the Childcare sector
- Career in an allied profession
- Further study at University

Work experience is a mandatory element of both Level 2 and Level 3 courses.





## Support Teaching & Learning

**Specification:** City & Guilds (QCF) Level 2 Supporting Teaching and Learning  
CACHE Level 3 Diploma in Specialist Support for Teaching and Learning in Schools

**Assessment:** Coursework, Portfolio of Evidence, Practical Demonstration/Assignment

### Programme Outline

#### Level 2:

Is ideal if you are starting out working or volunteering in a range of schools including primary, secondary or special needs schools. You will be working or volunteering in roles that support pupils' learning including teaching assistants, learning support assistants and special needs assistants. You will need to be supporting the teaching and learning of pupils who are aged 5 years or older. This qualification is not suitable for learners wishing to work in a foundation class.

#### Level 3:

This qualification provides an in-depth understanding of the knowledge and skills required when working directly with children or young people in primary, secondary or special schools. It covers all aspects of Specialist Support, some examples include; planning delivery and reviewing assessment strategies to support learning alongside the teacher equality and inclusion special needs support personal development reflective practice children's development theoretical perspective behaviour management health and safety communication and relationship development.

You will complete 11 mandatory units and choose from a large range of optional units in order to complete the required number of credits. Your tutor/assessor will offer guidance on which optional units will best fit your role in your school.

#### Progression:

- Teaching assistant
- Learning support assistant
- Special needs assistant
- Parent Support Advisor
- Learning mentor

Work experience is a mandatory element of both Level 2 and Level 3 courses.



# Health & Social Care

**Specification:** BTEC Level 1/2 First Diploma in Health & Social Care  
BTEC Level 3 National Extended Diploma in Health & Social Care

**Assessment:** Portfolio of Evidence

## Programme Outline Level 2:

This course will give you an in-depth study of the health and social care sector, supporting your progression to related degrees and pathway to a successful career in the sector. Will gain a comprehensive knowledge and understanding of the various aspects of health & social care with applied learning and study.

This qualification will cover topics such as:

- Communication
- Equality, diversity and inclusion
- Personal development
- Role of the social care worker
- Handling information
- Health and safety
- Safeguarding
- Duty of care
- Person centered approaches

## Programme Outline Level 3:

This course will give you an in-depth study of the health and social care sector, supporting your progression to related degrees and pathway to a successful career in the sector. Will gain a comprehensive knowledge and understanding of the various aspects of health & social care with applied learning and study.

This qualification will cover topics such as:

- The role of a health and social care worker
- Health and safety
- Equality and inclusion
- Personal development.
- Administering medication
- Working with babies and young children
- Helping people to eat and drink

## Progression:

This qualification can help you succeed in a wide range of healthcare settings, such as:

- Residential care
- Community and primary care
- Acute health environments (eg hospitals)
- Domiciliary services (home care / home help)
- Supported living projects
- Community-based care
- Private care for a person or family





# Public Services

**Specification: BTEC Level 1/Level 2 First Diploma in Public Services**  
**BTEC Level 3 National Extended Diploma in Public Services**

**Assessment:** Portfolio of evidence, practical assignments /demonstrations. Task-based assessment and Written examination.

**Programme Outline:** Our exciting projects and assignments based on public service related situations help you develop skills in areas such as teambuilding and planning, physical fitness alongside knowledge of the issues facing the public service sector today. Work experience is built into the course. All students will have unlimited use, membership and induction program for the YMCA Plymouth fitness suite for the duration of their course.

The course is made up of units completed in one (L2) or two (L3) academic years including:

- Government, Policies and the Public Services
- Leadership and Teamwork in the Public Services
- Citizenship, Diversity and the Public Services
- Understanding Discipline in the Uniformed Public Services
- Fitness Testing and Training for the Uniformed Public Services

## What are the career opportunities that are available to me?

There are many careers which you can follow after completing this course as well as becoming a member of a uniformed public service.

## What qualities will I need?

You will need to be fit and active and be able to develop very good communication skills. You will need patience and ability to get on with a wide range of people.

## What will I need to wear?

Are uniform or specific sports will be required - usually a tracksuit or similar outfit. As part of your course you will be issued with a hoodie. You will need to look professional be able to move freely. For highly specialist sports (watersports) special clothing (wetsuits) will be provided.

## What opportunities for this course open for me?

On completion of level two, students will have the opportunity to progress to level 3 (conditions of merit grade) or seek employment in the public service sector. On completion of level three courses students sometimes continue onto higher education or further their career in the public services.

# Hairdressing

**Specification:** City & Guilds Diploma in Women's and Men's Hairdressing - Level 2 / Level 3 (ATL)  
VTCT Level 2 Diploma in Women's Hairdressing (GHQ)

**Assessment:** Coursework, Portfolio of Evidence, Practical Demonstration/Assignment.

## Programme Outline Level 2:

The Level 2 VRQ Diploma in Hairdressing provides the necessary skills and knowledge that prove competence as a junior stylist.

This qualification allows candidates to learn, develop and practice the skills required to provide hairdressing services for all hair types.

The Level 2 VRQ Diploma in Hairdressing covers a range of skills and knowledge such as cutting, drying, styling, colouring and lightening, relaxing and perming as well as shampooing and consulting with clients.

To achieve a Level 2 each candidate must complete 7 mandatory units and 3 optional units and complete a mandatory work experience.

## Programme Outline Level 3

The Level 3 Advanced Technical Diploma in Hairdressing is based on the National Occupational Standards for Hairdressing.

It is a job ready qualification which requires learners to demonstrate in the workplace the skills and knowledge required in the hairdressing industry. This qualification attests to a high level of occupational competence and the job readiness of the learner.

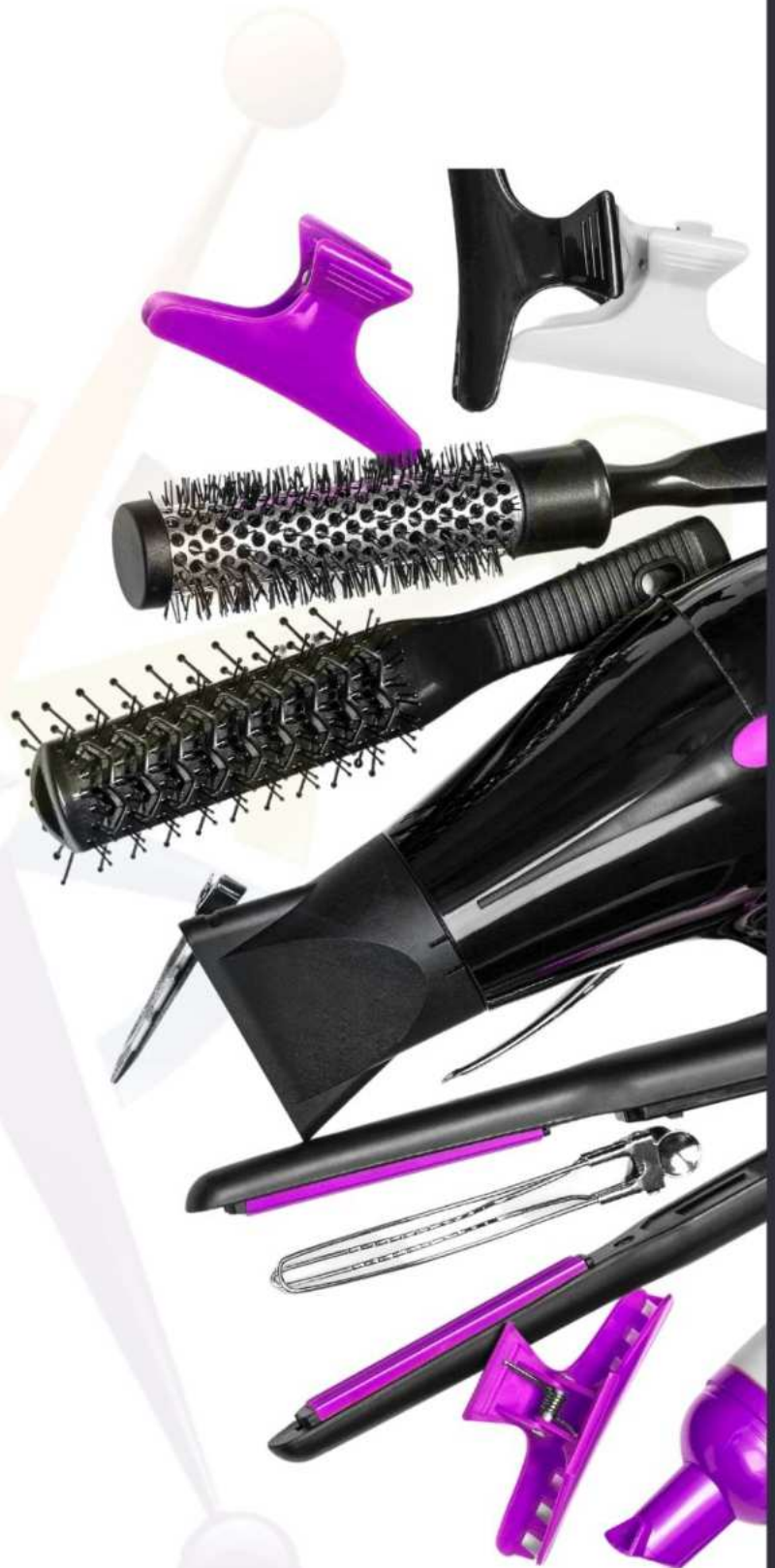
You will need to have completed Level 2 hairdressing and have literacy skills at level 2 or working towards Level 2.

To achieve a Level 3, each candidate must complete 5 mandatory units, plus 3 optional units.

## During the course students will cover elements from

- Setting and dressing hair
- Styling and finishing hair
- Changing hair colour
- Plaiting and twisting hair
- Fulfilling salon reception duties
- Advising and consulting with clients
- Cutting women's hair
- Colour correction
- Cutting men's hair

**Progression:** You could progress into employment or a higher level apprenticeship to continue your learning.



# Beauty Therapy

**Specification:** City & Guilds Diploma in Beauty Therapy - Level 2 / Level 3 (ATL)  
 VTCT Level 2 Diploma in Hair and Media Make-up (GHQ)  
 VTCT Level 2 Diploma in Nail Services (GHQ)

**Assessment:** Portfolio of Evidence, Practical Demonstration/Assignment

## Programme Outline Level 2

The programme covers a wide range of skills including skin care and facial treatments, professional make-up application, lash and brow treatments, waxing techniques as well as manicure and pedicure services. Nail Art units have now been added to this course. The course has been specifically designed to develop the knowledge and skills to prepare you for employment as a beauty therapist specialising in make-up, skin care and nails.

This qualification includes all the required elements to work effectively as a beautician specialising in facial skincare, enhancement of eyebrows and eyelashes, make-up services, effectiveness at work, health and safety and promoting additional products and services to clients. Work experience is a mandatory element of this course.

## Programme Outline Level 3

This Level 3 Diploma in Beauty Therapy is made up of a minimum of 65 credits; 2 mandatory core units, 4 mandatory technical units. A minimum of 10 credits are required from the optional units.

The programme covers a wide range of skills including advanced skin care and electrical facial treatments such as micro-dermabrasion and non surgical face lifting, to Indian Head massage and body electrotherapy slimming treatments as well as hot stone therapy, manual and spray tanning techniques.

Throughout this qualification you will develop your knowledge and understanding of relevant anatomy and physiology, health and safety, and client care. You will also develop a range of technical skills in preparing the skin, and applying beauty therapy products and electrical equipment to the skin, using a variety of different techniques. You will develop interpersonal skills that will assist you to communicate effectively with clients. Work experience is a mandatory element of this course.

**Progression:** This qualification can help you to move into employment or self employment as a Beauty Therapist or develop you to become a senior member of staff in a salon. It also acts as a route into qualifications such as: Level 4 Diploma in Management Practice and Advanced Techniques in the Hair and Beauty Sector, Complimentary therapies or Foundation degrees. Employment options include: working as a Beauty therapist or Skin Care Consultant in a spa as well as opportunities to work on cruise ships, VIP airport departure lounges providing treatments and at 4\* and 5\* hotels.





# Travel & Tourism

**Specification:** BTEC Level 1/2 First Diploma in Travel and Tourism

**Assessment:** Coursework, E-assessment, Multiple Choice Examination, Oral Examination, Portfolio of Evidence, Practical Demonstration/Assignment, Practical Examination, Task-based Controlled Assessment, Written Examination. Work experience is a mandatory element of this course.

## Programme Outline

### Duration 1 Year

BTEC Firsts in Travel and Tourism can help you take your first steps towards a career in retail or business travel. You'll learn essential skills such as business awareness, customer service and understanding destinations in the UK and worldwide.

### What will I study?

- Understanding the Travel and Tourism sector
- Travel and Tourism Destinations
- Factors affecting worldwide travel
- Customer experience and needs
- Economic impact and industries

### Career Pathway

The qualification is equivalent to four GCSEs grade A-C with a pathway to studying on a related Level 3 programme. Additionally you will be equipped for an entry-level career in the sector.

### What can this lead to?

Careers you can inspire to with this course include:

- Travel Agent
- Cabin Crew
- Customer Service
- Sale Advisor
- Hospitality/Hotel Worker
- Outdoor activities co-ordinator

### Entry Requirements

- 4 GCSEs Grade 4
- Relevant Level 2 qualifications

# Sport

**Specification:** Pearson BTEC Level 2 First Diploma in Sport  
Pearson BTEC Level 3 National Extended Diploma in Sport

**Assessment:** Portfolio of Evidence, Practical Demonstration/Assignment  
Task-based Controlled Assessment, Written Examination.

## Programme Outline

Our exciting projects and assignments based on sport related situations help you develop skills in areas such as coaching, teambuilding and planning, alongside knowledge of the issues facing the sector. Join the programme and prepare yourself for employment or further study. BTEC First Diploma: GCSEs Grades 5-9 equivalent. Work experience will be built into the course.

The course is made up of units completed in one (L2) or two (L3) academic years including:

- Fitness for sport and exercise
- Practical sports performance
- Leading sports activities
- Injury in sport
- Injury and the sports performer
- Running a sports event

## What are the career opportunities that are available to me?

In sport there is the opportunity to work in personal fitness, professional sport, PE teaching to name a few. These students want to keep fit, live longer and have healthy lives.

## What qualities will I need?

You will need to be fit and active and be able to develop very good communication skills. Being good at one particular sport will be helpful. You will need patience and an ability to get on with all sorts of people.

## What will I need to wear?

A uniform or specific sports wear will be required - usually a tracksuit or similar outfit. You will need to look professional but be able to move freely. For highly specialised sports (watersports) special clothing (wetsuits) will be provided.

## What opportunities will this course open for me?

On completion of Level 2, the students will have the opportunity to progress to Level 3 (conditions of Merit Grade) or seek employment in the Sport sector. Most students progress to an apprenticeship or apply for a position of employment. Many of those completing Level 3 courses continue to Higher Education and become sports teachers or managers, sports leaders, coaches, fitness instructors, sports technicians, physiotherapists and administrators.

## Where can I complete my work placement?

At local gyms, working in the fitness industry or through being a member of the cadets.



# ENGLISH and MATHEMATICS

## RE-TAKE OPTIONS

### English

#### Why should I study this subject?

Students who have not achieved a GCSE grade 4 or above in English Language are required by law to retake this subject as part of Government legislation and in order to prepare students fully for the world of work following their studies. They will complete two exams in Summer 2023.

#### What will I study?

The GCSE in English Language covers the following skills:

- Read and understand a wide range of texts.
- Evaluate texts critically and make comparisons.
- Summarise and synthesise ideas from texts.
- Write coherently using Standard English.
- Correct grammar, punctuation and spelling.
- Use Spoken English effectively.

#### How will I be assessed?

##### Paper 1: Creative Reading and Writing

1 hour 45 minutes

##### Paper 2: Viewpoints and Perspectives

1 hour and 45 minutes

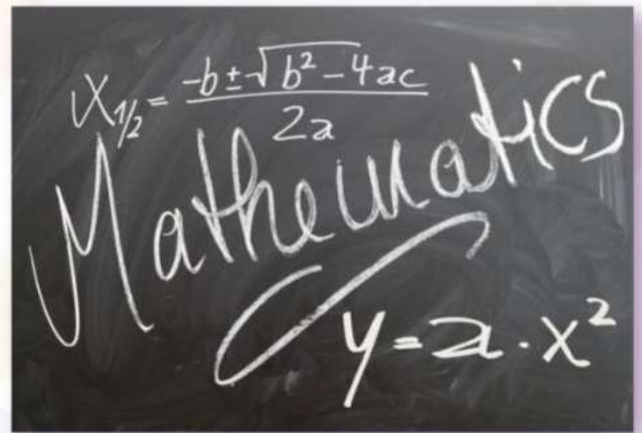
Certificated Spoken Language Study

#### Exam Board

AQA 8700

#### For further information contact:

Ms A Toze (Head of English)



### Mathematics

#### Why should I study this subject?

Students who did not get a Grade 4 will have the opportunity to improve their grade or continue to develop their skills in the subject. Students will resit the exam and study towards this throughout the year.

#### What will I study?

If you follow the GCSE course you will cover the following concepts:

- Number and Algebra
- Geometry and Measures
- Using and Applying Mathematics
- Data Handling
- Ratio and Proportion

#### How will I be assessed?

Assessment is based on three final examinations

##### Paper 1 Written paper - non-calculator

1 hour 30 minutes

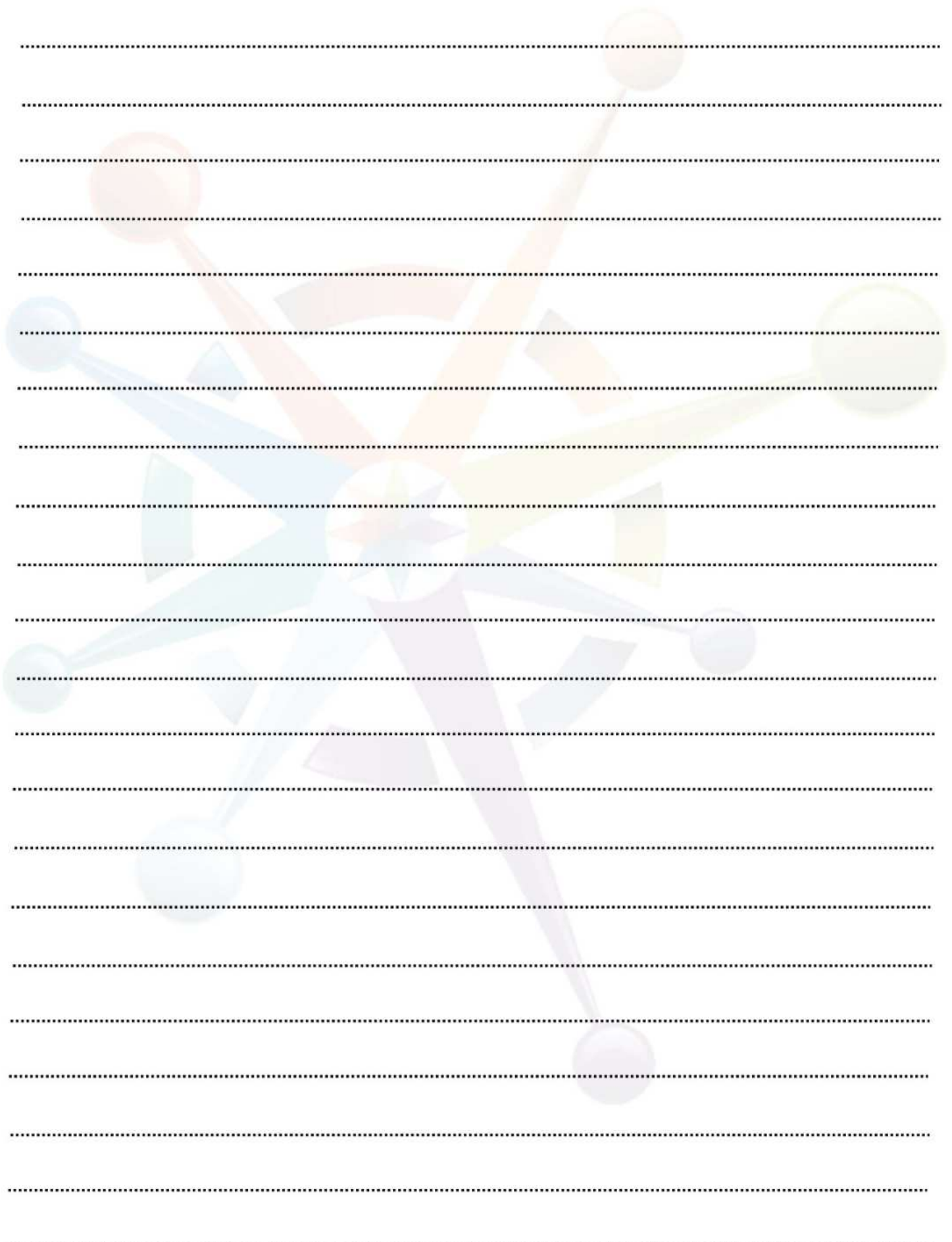
##### Papers 2 & 3 Written paper - Calculator

1 hour 30 minutes

#### For further information contact:

Ms S Lodge (Research Lead)

# NOTES



A series of horizontal dotted lines for writing notes, overlaid on a large, faint, colorful graphic in the background.



# Where Are They Now?

## Lipson Academy Alumni 2022

Sally Ahmad-Eid	Plymouth University	Dietetics
Abdulrahman Aldrouich	Exeter University	Engineering
Heba Aldarouich	Bristol, University West of England	Biomedical Science
Merlin Ashton	Plymouth University	Acting
Imogen Bishop	Northumbria University, Newcastle	Physiotherapy
Ben Brinton	Plymouth University	English
Laura Bylicka	London Metropolitan University	Interior Design
Carlin Coath	Plymouth Marjon University	Football Coaching
Martha Chol	Plymouth University	Law
Emelia Cole	Exeter University	English and Creative Writing
Samuel Colvin	Arts University Plymouth	Animation and Games
Lucy Dann	Cardiff Metropolitan University	Sport Rehabilitation
Amber Davey-Walmsley	Lancaster University	Business Management
Ellie Davies	Plymouth University	Psychology and Criminology
Steven Douglas	Plymouth University	Media
Keira Fitzgerald	Plymouth University	Business Management
Megan Evans	City College (Plymouth University)	Health and Social Care
Evie Fell	Arts University Plymouth	Art
Ellie Hall	University of Westminster	Law with French Law
Daniel Healy	Plymouth University	Illustration
Euan Henderson	Cardiff University	Politics and Philosophy
Ellecia Longley	Plymouth University	Accounting and Finance
James Loving	Plymouth University	Business Management
Daisy Lynch	Arts University, Bournemouth	Makeup for Media & Performance
Daria Misu	Falmouth University	Architecture
Medeea Misu	Plymouth University	Games Development
George Reed	Bristol, University West of England	Aerospace Engineering
Sophie Rice	Plymouth University	Art History
Natalia Rojek	Plymouth University	Business Management
Francesco Romano	London Metropolitan University	Chemistry
Ivan Sazhin	Nottingham Trent University	Quantity Surveying
Martha Shaw	Arts University Plymouth	Film and Screen Arts
Catherine Shepherd	Specsavers	Technician Apprenticeship
Katrina Simule	Queen Mary London University	English Literature
Kamil Stec	Babcock	Mechanical Engineering Apprenticeship
Emily St John	City College	MIS Apprenticeship
Jakub Szelag	Plymouth University	Computer Science
Dominik Tatarek	Bristol, University West of England	Aerospace Engineering
Reshma Thapa-Magar	Bristol, University West of England	Biomedical Science
George Waines	University of South Wales	Football Coaching
Wiktoria Wrzesniak	Plymouth University	Law and Criminology

